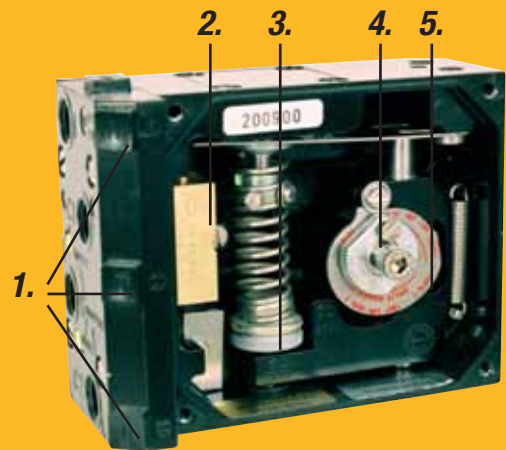


# *P5 Pneumatic Positioner*

Product  
Information



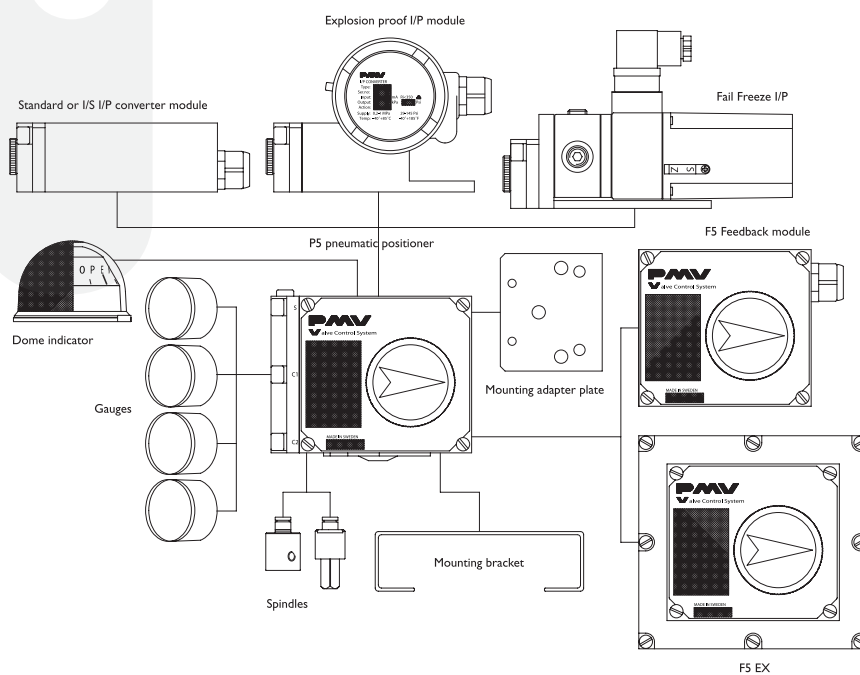
1. Gauge ports
2. Gold plated spool valve
3. Simple calibration, external zero adjustment
4. Stainless cam
5. Simple cam locking



## ***P5 Pneumatic Positioner***

### **P5**

- Sturdy, robust simple design
- Pilot valve with high gain
- Large, bright position indicator flat or Dome
- Stainless steel cam
- Threaded vent port
- Easy to add on feedback unit or I/P converter
- External zero adjustment
- Gauge ports standard





## Technical data

Input signal	20 –100 KPa/3–15 Psi (6–30 Psi option)
Linearity	≤ 0.5%*
Hysteresis	≤ 0.5%*
Repeatability	≤ 0.5%*

Gain factor at: 600 KPa/87 Psi	High Performance Version	Normal Gain Version
	Min: 1000 KPa/KPa	Min: 450 KPa/KPa
	Min: 66%/ % ISA S75.13-1989	Min: 30%/ %

### Max. air consumption at supply pressure:

0.2 MPa/29 Psi	6.1 nl/min (0.22 SCFM)	2.7 nl/min (0.1 SCFM)
0.4 MPa/58 Psi	13.6 nl/min (0.48 SCFM)	6.1 nl/min (0.21 SCFM)
0.6 MPa/87 Psi	22 nl/min (0.78 SCFM)	9.9 nl/min (0.35 SCFM)
0.8 MPa/116 Psi	30.5 nl/min (1.08 SCFM)	13.7 nl/min (0.48 SCFM)
1 MPa/145 Psi	39 nl/min (1.38 SCFM)	17.5 nl/min (0.62 SCFM)

### Min. air delivery at supply pressure:

0.2 MPa/29 Psi	200 nl/min (6.9 SCFM)	156 nl/min (5.5 SCFM)
0.4 MPa/58 Psi	370 nl/min (12.8 SCFM)	288 nl/min (10.1 SCFM)
0.6 MPa/87 Psi	540 nl/min (18.8 SCFM)	421 nl/min (14.8 SCFM)
0.8 MPa/116 Psi	710 nl/min (24.7 SCFM)	553 nl/min (19.4 SCFM)
1 MPa/145 Psi	880 nl/min (30.6 SCFM)	686 nl/min (24 SCFM)

Position sensitivity	None
Supply pressure effect	Max. 1MPa/150 Psi
Temperature range	–20°C to +85°C/(–4°F to +185°F)
Low temp option	–40°C to +85°C/(–40°F to +185°F)
Connector threads	1/4" NPT or G (BSP)
Gauge threads	1/8" NPT or G (BSP)
Weight	1.1 kg/2.4 lbs
Housing	Die cast aluminum
Surface treatment	ED Epoxy paint, black
Fasteners	A2/A4 Stainless
Ingress protection	IP 66/NEMA 4

ATEX II 1 GD

\* Percent of full scale



### Modular

**Simple to add on:**

- Feedback Unit F5
- Dome Style Indicator
- I/P Converter



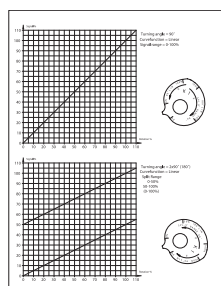
F5

### P5 Series Coding

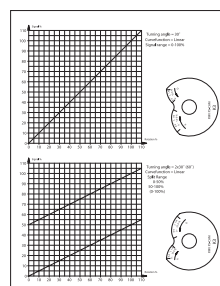
<b>Model no</b>	PP5XX	Single and (Double acting pneumatic)
	PA5XX	Single and (Double acting pneumatic, ATEX)
<b>Spoolvalve</b>	HP	High performance
	LB	Standard performance
<b>Connection threads</b>	G	1/4" G air
	N	1/4" NPT air, M20 x 1,5 electrical
<b>Surface treatment</b>	U	Epoxy, ED
	M	Tufram R66
<b>Spindle</b>	01	14 mm female
	23	Rotary, Namur, VDI/VDE 3845
<b>Cam</b>	K01	Linear 90 deg
	K02	Linear 30/60 deg
<b>Frontcover</b>	PV9	90 deg, 0-100% scale
	PV6	60 deg, 0-100% scale
	PV4	45 deg, 0-100% scale
	PV3	30 deg, 0-100% scale
	PV0	Blank, no scale
<b>Function</b>	D	Direct
	R	Reverse
<b>Indicator</b>	A	Indicator
	B	Blind, No indicator
	H	Dome style, H5
<b>Input signal</b>	3	3-15 Psi (0,2-1 bar)
	6	6-30 Psi (0,4-2 bar)
<b>Seals/Temperature</b>	Z	Nitrile, NBR -20 to +85 deg C
	Q	Silicon, Q -40 to +85 deg C
	B	Gas sealed, w. Q Seals

P 5 - - - - - K - P V - - - - -

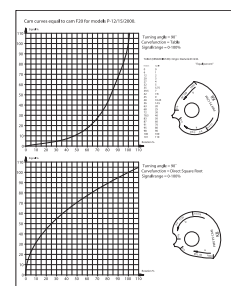
### Cams



K1

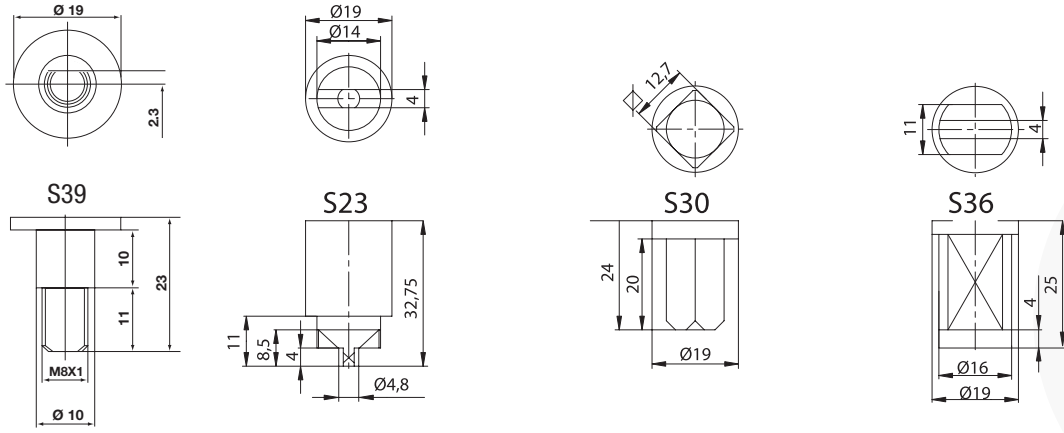


K3

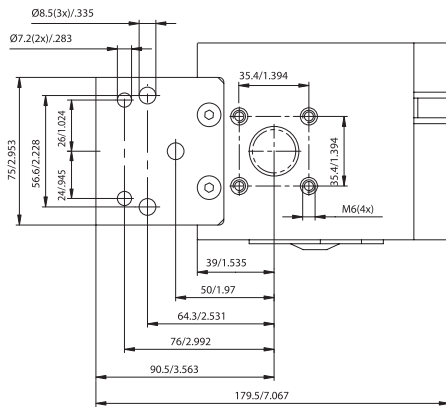


K8

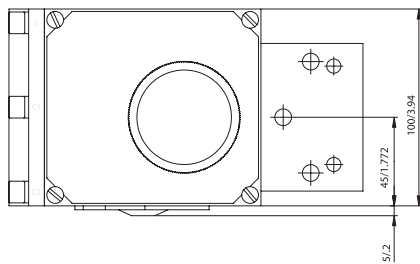
## Spindles



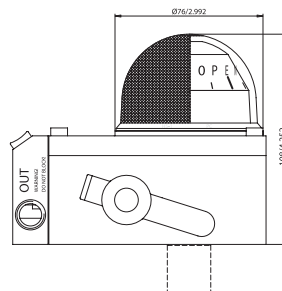
## Dimensions drawings (mm)



**P5**



**P5**

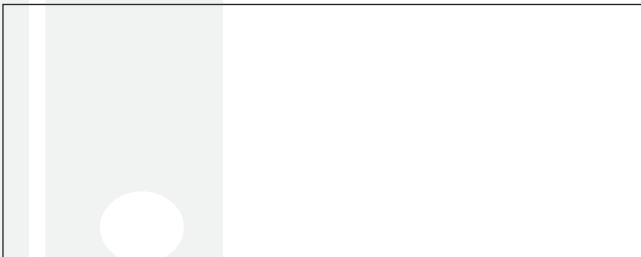


**P5 with H5**





p/n: FCD PMENBR0008-02



Hazardous Locations 

ATEX  II 1 GD

Flowserve Corporation has established industry leadership in the design and manufacture of its products. When properly selected, this Flowserve product is designed to perform its intended function safely during its useful life. However, the purchaser or user of Flowserve products should be aware that Flowserve products might be used in numerous applications under a wide variety of industrial service conditions. Although Flowserve can (and often does) provide general guidelines, it cannot provide specific data and warnings for all possible applications. The purchaser/user must therefore assume the ultimate responsibility for the proper sizing and selection, installation, operation, and maintenance of Flowserve products. The purchaser/user should read and understand the Installation and Maintenance (I & M) instructions included with the product, and train its employees and contractors in the safe use of Flowserve products in connection with the specific application.

While the information and specifications contained in this literature are believed to be accurate, they are supplied for informative purposes only and should not be considered certified or as a guarantee of satisfactory results by reliance thereon. Nothing contained herein is to be construed as a warranty or guarantee, express or implied, regarding any matter with respect to this product. Because Flowserve is continually improving and upgrading its product design, the specifications, dimensions and information contained herein are subject to change without notice. Should any question arise concerning these provisions, the purchaser/user should contact Flowserve Corporation at any one of its worldwide operations or offices.

©2008 Flowserve Corporation, Irving, Texas, USA. Flowserve and PMV are registered trademarks of Flowserve Corporation.

**Palmstierna International AB**  
Korta Gatan 9  
SE-171 54 Solna  
SWEDEN  
Tel: +46 (0) 8 555 106 00  
Fax: +46 (0) 8 555 106 01  
E-mail: [infopmv@flowserve.com](mailto:infopmv@flowserve.com)

**Germany**  
Flowserve  
Sperberweg 16  
D-41468 Neuss  
GERMANY  
Tel: +49 (0) 2131 795 74 80  
Fax: +49 (0) 2131 795 74 99  
E-mail: [pmvgermany@flowserve.com](mailto:pmvgermany@flowserve.com)

**UK**  
Flowserve  
Abex Road  
Newbury, Berkshire, RG14 5EY  
UK  
Tel: +44 (0) 1635 46 999  
Fax: +44 (0) 1635 36 034  
E-mail: [pmvukinfo@flowserve.com](mailto:pmvukinfo@flowserve.com)

**Italy**  
Flowserve Spa  
Via Prealpi, 30  
20032 Cormano (Milano)  
ITALY  
Tel: +39 (0) 2 663 251  
Fax: +39 (0) 2 615 18 63  
E-mail: [infoitaly@flowserve.com](mailto:infoitaly@flowserve.com)

**USA, Mexico**  
PMV-USA  
1440 Lake Front Circle, Unit 160  
The Woodlands, TX 77380  
USA  
Tel: +1 281 292 7500  
Fax: +1 281 292 7760  
E-mail: [pmvusa@flowserve.com](mailto:pmvusa@flowserve.com)

**Canada**  
Cancoppas Limited  
2595 Dunwin Drive, Unit 2  
Mississauga, Ont L5L 3N9  
CANADA  
Tel: +1 905 569 6246  
Fax: +1 905 569 6244  
E-mail: [controls@cancoppas.com](mailto:controls@cancoppas.com)

**Asia Pacific Headquarters**  
Flowserve Pte Ltd.  
No. 12 Tuas Avenue 20  
REPUBLIC OF SINGAPORE 638824  
Tel: +65 (0) 687 98900  
Fax: +65 (0) 686 24940  
E-mail: [fcdasiaprocess@flowserve.com](mailto:fcdasiaprocess@flowserve.com)

**South Africa**  
Flowserve  
Unit 1, 12 Director Road  
Spartan Ext. 2  
1613 Kempton Park, Gauteng  
SOUTH AFRICA  
Tel: +27 (0) 11 397 3150  
Fax: +27 (0) 11 397 5300

**The Netherlands**  
Fabromatic BV  
Rechtzaad 17  
4703 RC Roosendaal  
THE NETHERLANDS  
Tel: +31 (0) 30 6771946  
Fax: +27 (0) 30 6772471  
E-mail: [fcbinfo@flowserve.com](mailto:fcbinfo@flowserve.com)

**China**  
Flowserve  
Hanwei Building  
No. 7 Guanghua Road  
Chao Yang District  
100004 Beijing  
CHINA  
Tel: +86 (10) 6561 1900  
Fax: +86 (10) 6561 1899

[www.pmv.ru](http://www.pmv.ru)