



Reed switch compact mechanical pressure switch Standard White Series

P1100-W/P4100-W/P8100-W Series

· Compatible with module connection to SELEX F.R.L.



Specifications

Item	P1100-W	P4100-W	P8100-W
Working fluid	Compressed air		
Max. working pressure MPa	1.0 (≈150 psi, 10 bar)		
Set pressure MPa	0.1 (≈15 psi, 1 bar) to 0.6 (≈87 psi, 6 bar)		
Hysteresis MPa	0.08 (≈12 psi, 0.8 bar) or less		
Repeatability MPa	±0.02 (≈2.9 psi, 0.2 bar) or less		
Contact array	1a *1		
Wiring	Lead wire (oil resistant vinyl cabtyre cord 2-conductor 0.2 mm ²)		
Ambient / fluid temperatures	5 (41°F) to 60 (140°F)		
Degree of protection *2	IP20 or equivalent		
Product weight (excluding joiner) kg	0.13	0.19	0.41

*1: The contact turns ON if air pressure exceeding the scale set pressure is applied.

*2: Note that when connecting an option fitting into the atmospheric pressure inlet port and extend the tube until water does not enter, IP65 or equivalent is applied. Not for outdoor use.

Wiring section specifications

Load voltage	12/24 VDC	100 VAC
Load current	5 to 50 mA	7 to 20 mA
Internal voltage drop	3 V or less	
Light	LED (Lit when ON)	
Max. shock resistance	294 m/S ²	
Insulation resistance	20 MΩ and over at 500 VDC megger	
Withstand voltage	No failure after 1 minute of 1,000 VAC application.	

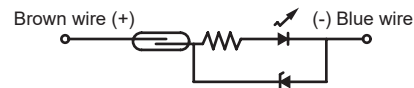
Option weight

* Add to the weight of the standard accessories.

Unit: g

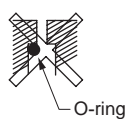
Code	Attachment					Lead wire length		
	Blank	B11W	B31W	B41W	B81W	4	3	5
P1100	11	24				2	30	60
P4100	36		86	94		2	30	60
P8100	94				170	2	30	60

Internal circuit diagram

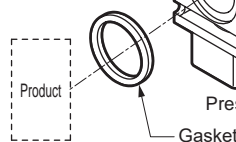
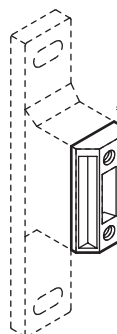


IN side sealing contact of pressure switch

Product side Pressure switch side

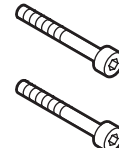
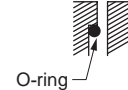


Sealing contact of pressure switch (P*100-W)



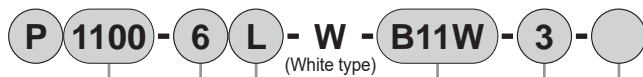
OUT side sealing contact of pressure switch

Pressure switch side Product side



How to assemble (P1100-W, P4100-W, P8100-W)

How to order (modular design)



A Series model No.

B Port size

C Branch direction

D Attachment

E Length of lead wire

F Option

⚠ Precautions for model No. selection

- *1 : This is used for intermediate connection of the module series so the module connection section is not threaded.
- *2 : A plug matching the port size is included.
- *3 : When piping the P□100-W single unit, use pipe adaptor A□00-W.
(The horizontal direction port does not have threads.)

Code		Description		
A Series model No.				
1100	1000-W Series modular design			
4100	2000-W, 3000-W, 4000-W Series modular design			
8100	6000-W, 8000-W Series modular design			
B Port size				
		1100	4100	8100
6	Rc1/8	●		
8	Rc1/4	●	●	
10	Rc3/8		●	
15	Rc1/2		●	
20	Rc3/4			●
25	Rc1			●
C Branch direction *1				
Blank *2	L	R		
D Attachment				
		1100	4100	8100
Blank	Joiner set, gasket	●	●	●
B11W	T-bracket, gasket	●		
B31W	T-bracket, gasket		●	
B41W	T-bracket, gasket		●	
B81W	T-bracket, gasket			●
4	Fitting for atmosphere inlet port attached (M3 elbow)	●	●	●
E Length of lead wire				
Blank	1 m			
3	3 m			
5	5 m			
F Option				
Blank	None			
P6	Copper and PTFE free specification (made-to-order product)			

Specifications for rechargeable battery (Catalog No. CC-1226A)

- Structure compatible with rechargeable battery manufacturing process

P4100 - - P4

F.R.L.
F.R.
F (Filtr)
R (Reg)
L (Lub)
Drain Separ
Mech Press SW
Res press exh valve
SlowStart
Anti-bac/Bac-remove Filtr
Film Resist FR
Oil-ProhR
Med Press FR
No Cu/ PTFE FRL
Outdrs FRL
Adapter Joiner Press Gauge
CompFRL
LgFRL
PrescR
VacF/R
Clean FR
ElecPneuR
AirBoost
Speed Ctrl
Silncr
CheckV/ other
Fit/Tube
Nozzle
Air Unit
PrescCompn
Electro Press SW
ContactSW
AirSens
PresSW Cool
Air Flo Sens/Ctrl
WaterRISens
TotAirSys (Total Air)
TotAirSys (Gamma)
Gas generator
RefrDry
DesicDry
HiPolymDry
MainFiltr
Dischrg etc
Ending

P*100-W Series

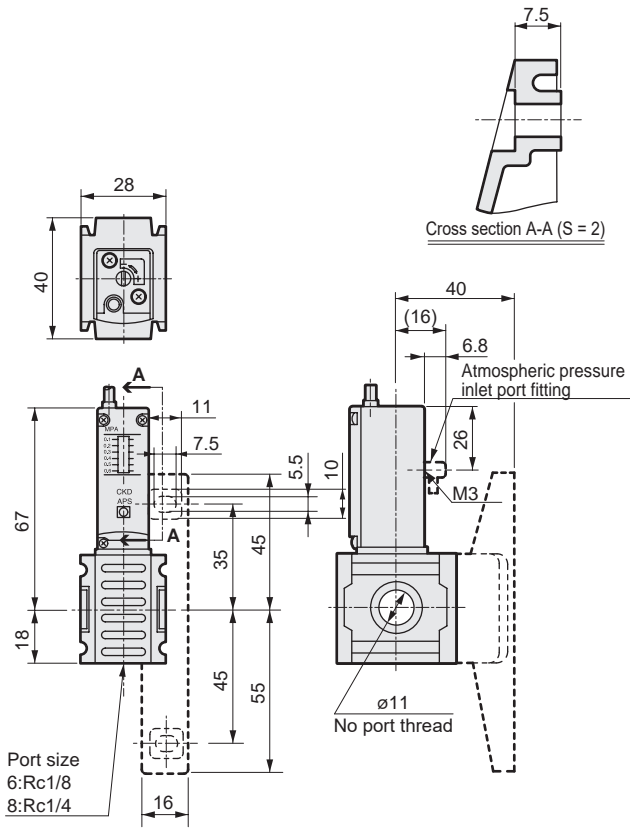


Dimensions

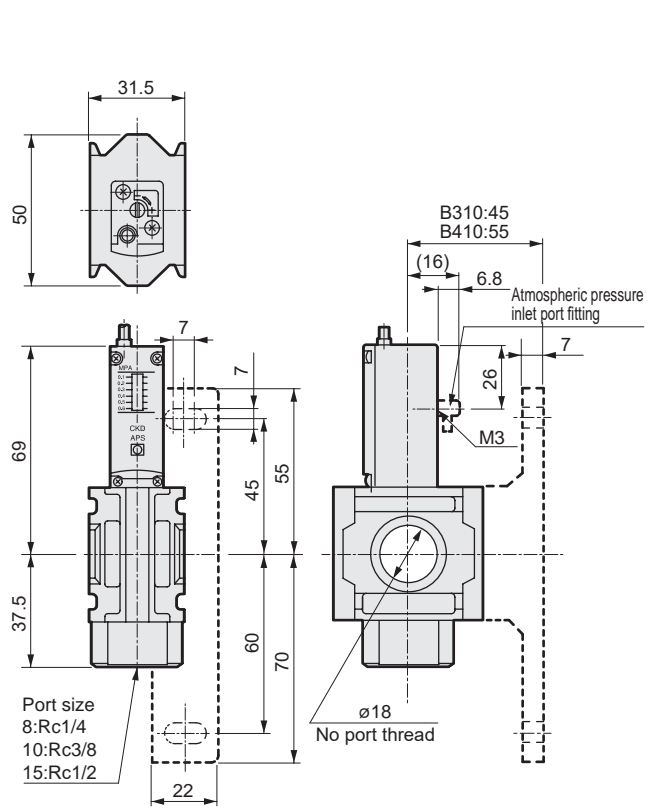
- F.R.L.
- F.R.
- F (Filtr)
- R (Reg)
- L (Lub)
- Drain Separ
- Mech Press SW
- Res press exh valve
- SlowStart
- Anti-bac/remove Filtr
- Film Resist FR
- Oil-Prohr
- Med Press FR
- No Cu/ PTFE FRL
- Outdrs FRL
- Adapter Joiner Press Gauge
- CompFRL
- LgFRL
- PrecsR
- VacF/R
- Clean FR
- ElecPneur
- AirBoost
- Speed Ctrl
- Silncr
- CheckV/ other
- Fit/Tube
- Nozzle
- Air Unit
- PrecsCompn
- Electro Press SW
- ContactSW
- AirSens
- PresSW Cool
- Air Flo Sens/Ctrl
- WaterRtSens
- TotAirSys (Total Air)
- TotAirSys (Gamma)
- Gas generator
- RefrDry
- DesicDry
- HiPolymDry
- MainFiltr
- Dischrg etc
- Ending

● P1100-W

● P4100-W

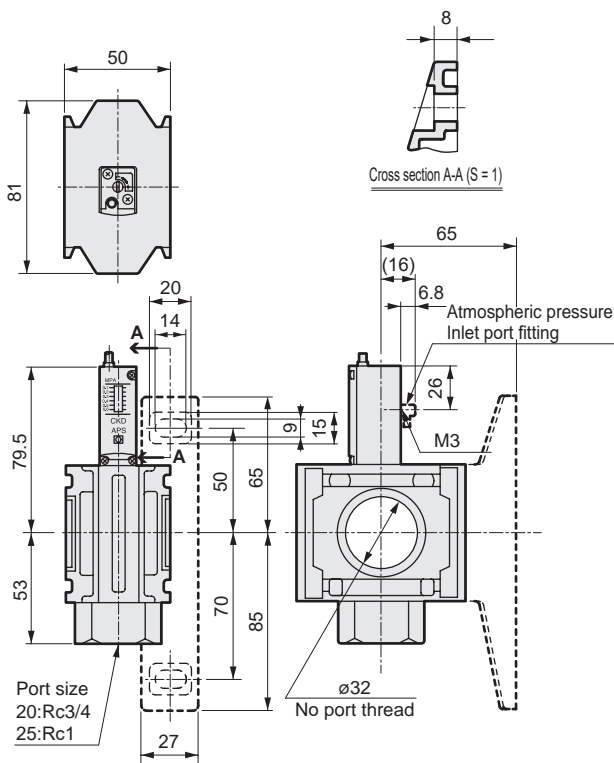


Weight 126 g



Weight 190 g

● P8100-W



Weight 467 g