

Pilot operated 2-port valve for dust collector
(Large port size dust collector)

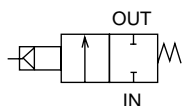
PD3/PDV3-20A/25A/40A Series

- Air operated/with solenoid valve
- Port size: Rc3/4, Rc1, IN: Rc1¹/₂-OUT: ø48, Rc1¹/₂

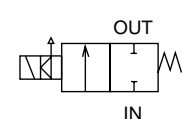


JIS symbol

- PD3 (Air operated)



- PDV3 (With solenoid valve)



Common specifications

Item	Air operated		With solenoid valve	
	PD3		PDV3	
Working fluid	Air (no corrosive gas)			
Min. working pressure differential MPa	0.1 (≈15 psi, 1 bar)			
Max. working pressure differential MPa	0.7 (≈100 psi, 7 bar)			
Max. working pressure MPa	0.7 (≈100 psi, 7 bar)			
Proof pressure (water pressure) MPa	2.0 (≈290 psi, 20 bar)			
Fluid temperature °C	-10 (14°F) to 60 (140°F), -10 (14°F) to 100 (212°F) for fluoro rubber seal (no freezing)			
Ambient temperature °C	-10 (14°F) to 60 (140°F), -10 (14°F) to 100 (212°F) for fluoro rubber seal			
Atmosphere	Place free of corrosive gas and explosive gas			
Valve structure	Pilot operated poppet structure			
Valve seat leakage cm ³ /min	300 or less, urethane rubber used for sealant material: 50 or less			
Pilot port size	Rc1/8			
Mounting orientation	Unrestricted			
Working environment	Indoors/outdoors		Indoors	
Electrical specifications	PDV3			
Rated voltage	100 VAC (50/60 Hz)/110 VAC (60 Hz), 200 VAC (50/60 Hz)/220 VAC (60 Hz), 12 VDC, 24 VDC			
Voltage fluctuation range	-10 to +10% of rated voltage			
Apparent power (VA)	Holding	7.5(50 Hz), 5.5(60 Hz)		
	Starting	20(50 Hz), 17(60 Hz)		
Power consumption (W)	AC	4.0(50 Hz), 3.4(60 Hz)		
	DC	6.5		
Thermal class	Class 130 (B) (coil option 4A: Class 180 (H) or equivalent)			
Degree of protection	IP65 or equivalent (*1)			

*1 : The T type terminal box is IP61 or equivalent.

Individual specifications

Item	Port size	Orifice size (mm)	Cv	Weight (kg)
Model No.				
● Air operated				
PD3-20A	Rc3/4	23	11	0.26
PD3-25A	Rc1	28	18	0.40
PD3-40A	IN:Rc1 ¹ / ₂ - OUT: ^{O.D. ø48} _{Length 52}	37	45	0.86
PD3-40A-RC	Rc1 ¹ / ₂	37	45	0.75
● With solenoid valve				
PDV3-20A	Rc3/4	23	11	0.41
PDV3-25A	Rc1	28	18	0.55
PDV3-40A	IN:Rc1 ¹ / ₂ - OUT: ^{O.D. ø48} _{Length 52}	37	45	1.01
PDV3-40A-RC	Rc1 ¹ / ₂	37	45	0.90

*1 : For a solenoid valve for driving the air operated PD3, use FAB31-6-3 (page 52), AB31-01-3 (page 154), AB41E4-02-3-03T (explosion proof, page 424) or PJVB (page 842).

*2 : The combination of PD3 and PJVB is recommended for outdoor use.

*3 : Contact CKD when using as a dust collector for ash treatment or combustion gas at a waste incinerator.

How to order

● Air operated

PD3 - 20A - N

● With solenoid valve

PDV3 - 20A - N 2C - AC100V

Model No.

A Port size
*2

B Sealant
*2
*3
*4

C Coil option
*4
*5

D Voltage
*5
*6

[Example of model No.]

PDV3-20A-2C-AC100V

Model : PDV3

- A** Port size : Rc3/4
- B** Sealant : Urethane rubber
- C** Coil option : Grommet lead wire
- D** Voltage : 100 VAC(50/60 Hz)/110 VAC(60 Hz)

Code		Description	Model No.		
			PD3	PDV3	
A Port size					
20A		Rc3/4	●	●	
25A		Rc1	●	●	
40A		IN: Rc1½, OUT: O.D. ø48, length 52	●	●	
40A-RC		Rc1½	●	●	
B Sealant					
Blank		Urethane rubber	●	●	
N		Nitrile rubber	●	●	
F		Fluoro rubber	●	●	
C Coil option					
2C	Std.	Grommet lead wire		●	
2CS	Option	Grommet lead wire with surge suppressor		●	
2E		With DIN terminal box (G1/2)		●	
2ES		With DIN terminal box/surge suppressor (G1/2)		●	
2G		With DIN terminal box (Pg11)		●	
2H		DIN terminal box/with lamp (Pg11)		●	
2HS		DIN terminal box with lamp/surge suppressor (Pg11)		●	
2CG		Conduit (CTC19)		●	
2CH		Conduit (G1/2)		●	
3T		With T type terminal box (G1/2)		●	
3R		T type terminal box with lamp (G1/2)		●	
3RS		T type terminal box with lamp/surge suppressor (G1/2)		●	
4A		Grommet lead wire (thermal class H or equivalent)		●	
D Voltage					
AC100V			100 VAC(50/60 Hz)/110 VAC(60 Hz)		●
AC200V		200 VAC(50/60 Hz)/220 VAC(60 Hz)		●	
DC24V		24 VDC		●	
DC12V		12 VDC		●	

- *1 : The combinations indicated with ● above are available.
- *2 : Item **B** Blank (sealant material: urethane rubber) is not available when port size is 40A or 40A-RC.
- *3 : When Item **B** is N or F (sealant material: nitrile rubber or fluoro rubber), the main valve material is nylon resin.
- *4 : For PDV3 Series, when Item **B** is F (sealant material: fluoro rubber), only 4A is available for Item **C** (coil option).
- *5 : When Item **C** (coil option) is 4A, only AC voltage is available.
- *6 : For voltages other than above, contact CKD.

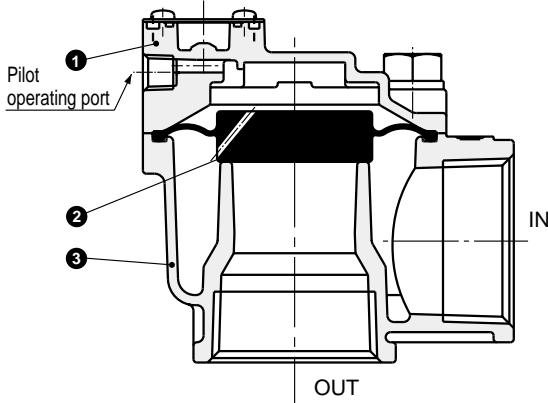
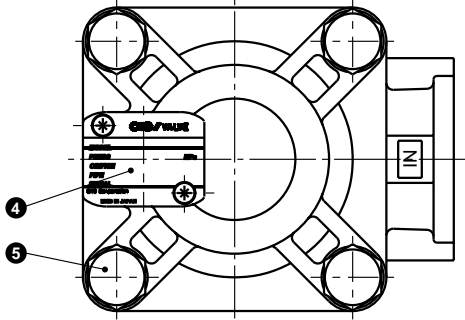
- EXA
- FWD
- HNB/G
- USB/G
- FAB/G
- FGB/G
- FVB
- FWB/G
- FHB
- FLB
- AB
- AG
- AP/AD
- APK/ADK
- DryAir
- EX-XPLNprf
- XPLNprf
- HVB/HVL
- SøB/NAB
- LAD/NAD
- Water-Rela
- NP/NAP/NVP
- SNP
- CHB/G
- MXB/G
- Other valves
- SWD/MWD
- DustColl
- CVE/CVSE
- CCH/CPE/D
- LifeSci
- Gas-Combus
- Auto-Water
- Outdoor
- SpecFld
- Custom
- Ending

PD3/PDV3 Series

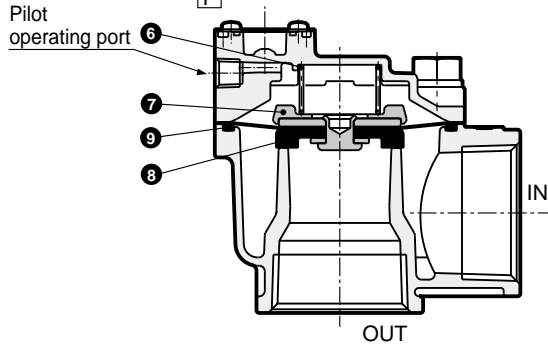
- EXA
- FWD
- HNB/G
- USB/G
- FAB/G
- FGB/G
- FVB
- FWB/G
- FHB
- FLB
- AB
- AG
- AP/AD
- APK/ADK
- DryAir
- EX-XPLNprf
- XPLNprf
- HVB/HVL
- S◇B/NAB
- LAD/NAD
- Water-Rela
- NP/NAP/NVP
- SNP
- CHB/G
- MXB/G
- Other valves
- SWD/MWD
- DustColl
- CVE/CVSE
- CCH/CPE/D
- LifeSci
- Gas-Combust
- Auto-Water
- Outdoor
- SpecFld
- Custom
- Ending

Internal structure and parts list: Air operated

● Sealant material: Urethane rubber
PD3-20A/25A



● Sealant material: Nitrile rubber/fluoro rubber
PD3-20A/25A/40A-NF *1
PD3-40A-RC-NF

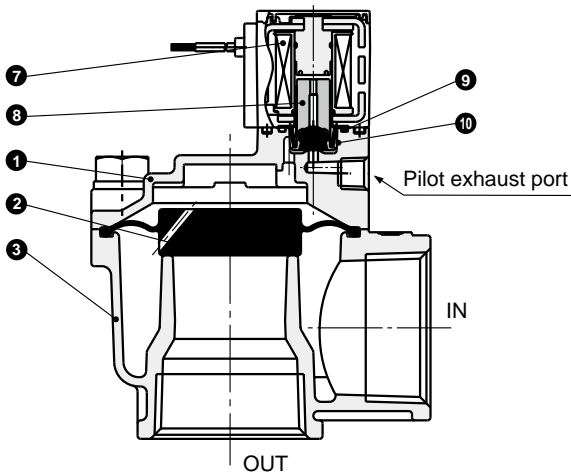
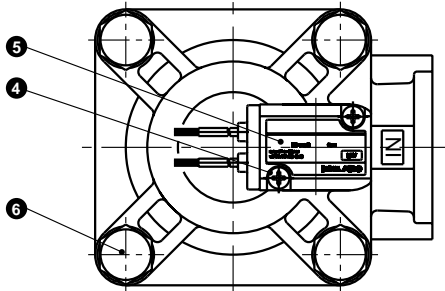


*1 : The shape of 40A body is different from the figure above.

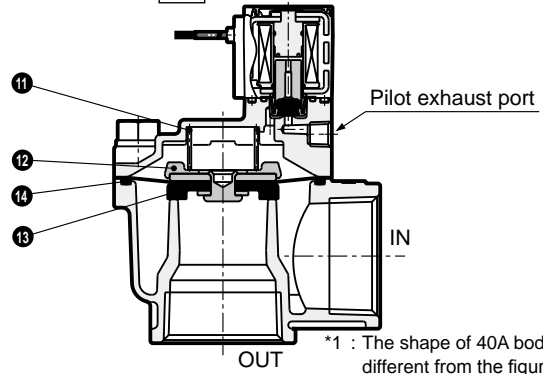
No.	Part name	Material
1	Cover	ADC12 Aluminum die-casting
2	Diaphragm	U Urethane rubber
3	Body	ADC12 Aluminum die-casting
4	Nameplate	A1200P Aluminum
5	Hexagon head bolt	SUSXM7 Stainless steel
6	Spring	SUS304 Stainless steel
7	Spacer	PA Nylon resin
8	Diaphragm assembly	SUS304, PA Stainless steel, nylon resin NBR or FKM Nitrile rubber or fluoro rubber
9	O-ring	NBR or FKM Nitrile rubber or fluoro rubber

Internal structure and parts list: With solenoid valve

● Sealant material: Urethane rubber
PDV3-20A/25A-2C (Grommet lead wire)



● Sealant material: Nitrile rubber/fluoro rubber
PDV3-20A/25A/40A-N2C *1
PDV3-40A-RC-N2CF4A
F4A



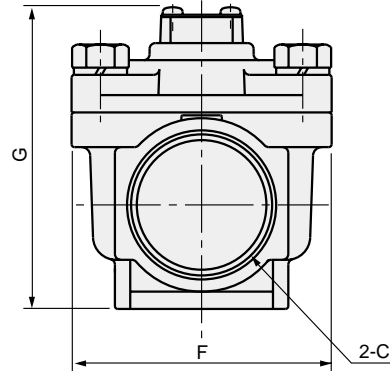
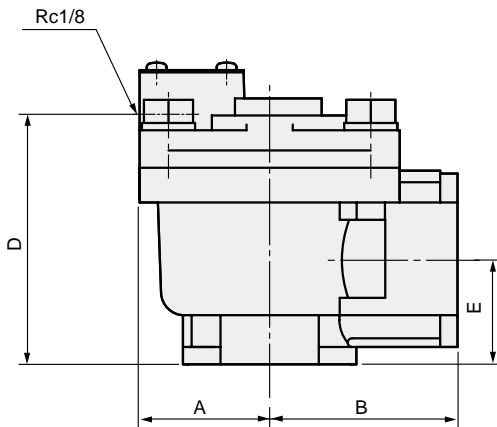
*1 : The shape of 40A body is different from the figure above.

No.	Part name	Material
1	Cover	ADC12 Aluminum die-casting
2	Diaphragm	U Urethane rubber
3	Body	ADC12 Aluminum die-casting
4	Phillips pan head machine screw, captive spring washer	SWRM Carbon steel wire for cold rolling
5	Nameplate	PET Polyethylene terephthalate
6	Hexagon head bolt	SUSXM7 Stainless steel
7	Coil assembly	Class B molded coil
8	Plunger assembly	K-M31, NBR or FKM Stainless steel/nitrile rubber or fluoro rubber
9	O-ring	NBR or FKM Nitrile rubber or fluoro rubber
10	Plunger spring	SUS304 Stainless steel
11	Spring	SUS304 Stainless steel
12	Spacer	PA Nylon resin
13	Diaphragm assembly	SUS304, PA Stainless steel, nylon resin NBR or FKM Nitrile rubber or fluoro rubber
14	O-ring	NBR or FKM Nitrile rubber or fluoro rubber

Dimensions: PD3 Series

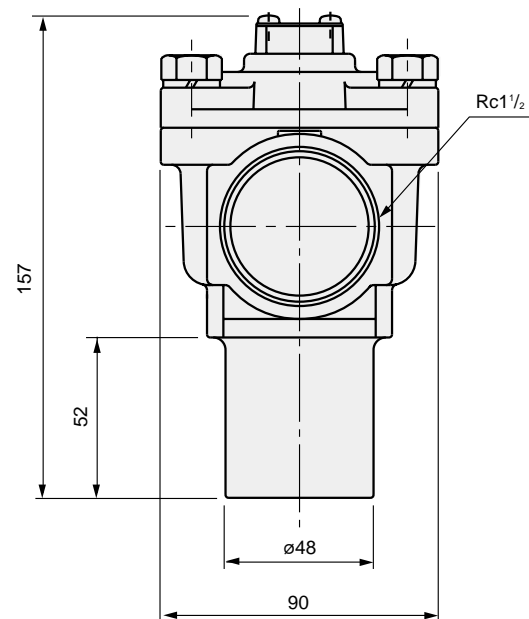
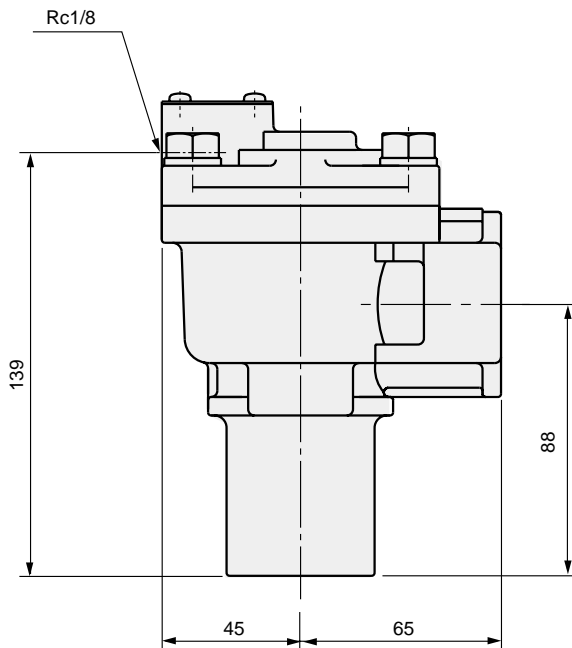


- Air operated
PD3-20A/25A
PD3-40A-RC



Model No.	A	B	C	D	E	F	G
PD3-20A	31.5	40	Rc3/4	64	31	60	83
PD3-25A	37.5	45	Rc1	76	39	71	95
PD3-40A-RC	45	65	Rc1½	86	36	90	105

- Air operated
PD3-40A



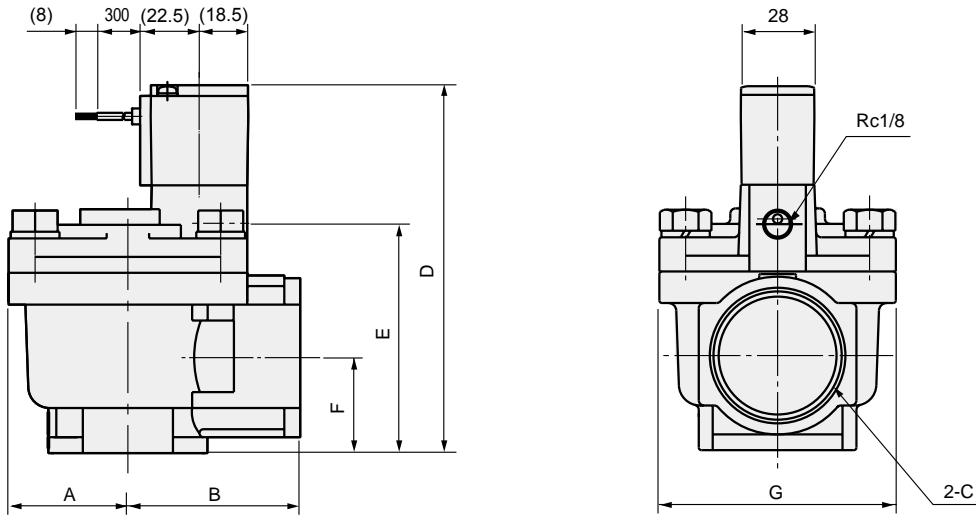
- EXA
- FWD
- HNB/G
- USB/G
- FAB/G
- FGB/G
- FVB
- FWB/G
- FHB
- FLB
- AB
- AG
- AP/
AD
- APK/
ADK
- DryAir
- EX-
XPLNprf
- XPLNprf
- HVB/
HVL
- S ⚡ B/
NAB
- LAD/
NAD
- Water-
Rela
- NP/NAP/
NVP
- SNP
- CHB/G
- MXB/G
- Other
valves
- SWD/
MWD
- DustColl**
- CVE/
CVSE
- CCH/
CPE/D
- LifeSci
- Gas-
Combus
- Auto-
Water
- Outdoor
- SpecFld
- Custom
- Ending

PD3/PDV3 Series



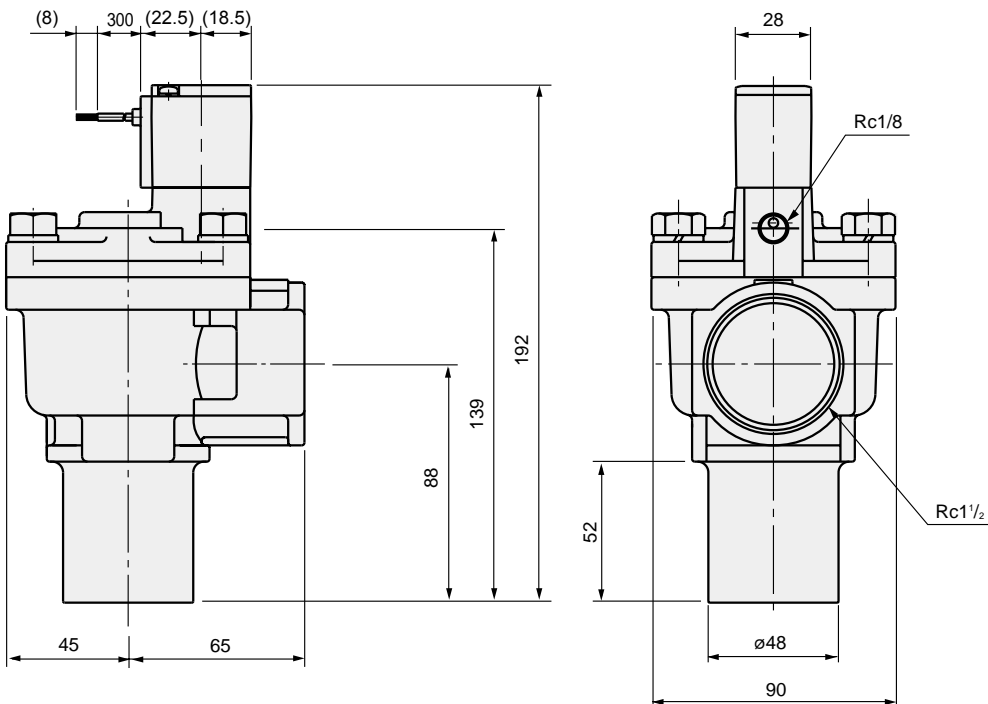
Dimensions: PDV3 Series

- Grommet lead wire with solenoid valve
PDV3-20A/25A-2C
PDV3-40A-RC



Model No.	A	B	C	D	E	F	G
PDV3-20A	31.5	40	Rc3/4	117	64	31	60
PDV3-25A	37.5	45	Rc1	129	76	39	71
PDV3-40A-RC	45	65	Rc1½	140	87	36	90

- Grommet lead wire with solenoid valve
PDV3-40A-2C



Optional dimensions

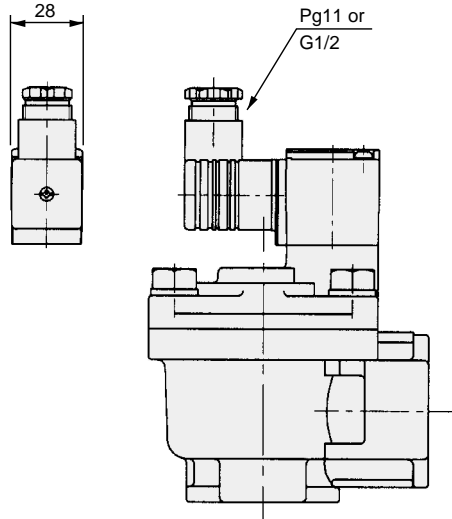


- DIN terminal box (with lamp/surge suppressor)

DIN terminal box with lamp

PDV3-*

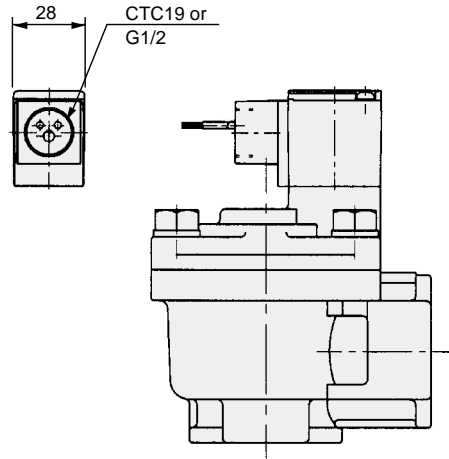
2E/2ES
2G
2H/2HS



- Conduit (CTC19 / G1/2)

PDV3-*

2CG
2CH

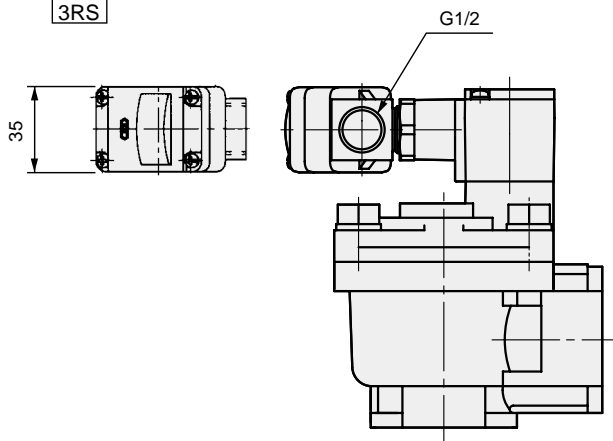


- T type terminal box (G1/2) (with lamp/surge suppressor)

T type terminal box with lamp (G1/2)

PDV3-*

3T
3R
3RS



EXA
FWD
HNB/G
USB/G
FAB/G
FGB/G
FVB
FWB/G
FHB
FLB
AB
AG
AP/ AD
APK/ ADK
DryAir
EX- XPLNprf
XPLNprf
HVB/ HVL
S ⚡ B/ NAB
LAD/ NAD
Water- Rela
NP/NAP/ NVP
SNP
CHB/G
MXB/G
Other valves
SWD/ MWD
DustColl
CVE/ CVSE
CCH/ CPE/D
LifeSci
Gas- Combus
Auto- Water
Outdoor
SpecFld
Custom
Ending



Pilot operated 2-port valve for large-diameter dust collector
(Large port size dust collector)

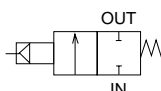
PD3/PDV3-65A/80A Series

- Air operated/with solenoid valve
- Port size: Rc2¹/₂, Rc3

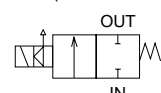


JIS symbol

- PD3 (air operated)



- PDV3 (with solenoid valve)



Common specifications

Item	Air operated	
	PD3	With solenoid valve PDV3
Working fluid	Air (no corrosive gas)	
Min. working pressure differential MPa	0.2 (≈29 psi, 2 bar)	
Max. working pressure differential MPa	0.8 (≈120 psi, 8 bar)	
Max. working pressure MPa	0.8 (≈120 psi, 8 bar)	
Proof pressure (water pressure) MPa	1.5 (≈220 psi, 15 bar)	
Fluid temperature °C	-10 (14°F) to 60 (140°F) (no freezing)	
Ambient temperature °C	-10 (14°F) to 60 (140°F)	
Atmosphere	Place free of corrosive gas and explosive gas	
Valve structure	Pilot operated poppet structure	
Valve seat leakage cm ³ /min	300 or less	
Pilot port size	Rc1/4	-
Mounting orientation	Unrestricted	
Working environment	Indoors/outdoors	Indoors
Electrical specifications		
PDV3		
Rated voltage	100 VAC(50/60 Hz)/110 VAC(60 Hz), 200 VAC(50/60 Hz), 220 VAC(50/60 Hz)	
Voltage fluctuation range	-10 to +10% of rated voltage	
Apparent power (VA)	Holding	7.5(50 Hz), 5.5(60 Hz)
	Starting	20(50 Hz), 17(60 Hz)
Power consumption (W) AC	4.0(50 Hz), 3.4(60 Hz)	
Thermal class	Class 130 (B)	
Degree of protection	IP65 or equivalent	

*1 : Use PJV8-8-5 as a solenoid valve for driving the air operated PD3.

*2 : Contact CKD when using as a dust collector for ash treatment or combustion gas at a waste incinerator.

*3 : The combination of PD3 and PJV8-8-5 is recommended for outdoor use.

Individual specifications

Item	Port size	Orifice size (mm)	Cv	Weight (kg)
Model No.				
● Air operated				
PD3-65A	Rc2 ¹ / ₂	68	100	3.2
PD3-80A	Rc3	82	155	4.6
● With solenoid valve				
PDV3-65A	Rc2 ¹ / ₂	68	100	3.4
PDV3-80A	Rc3	82	155	4.8

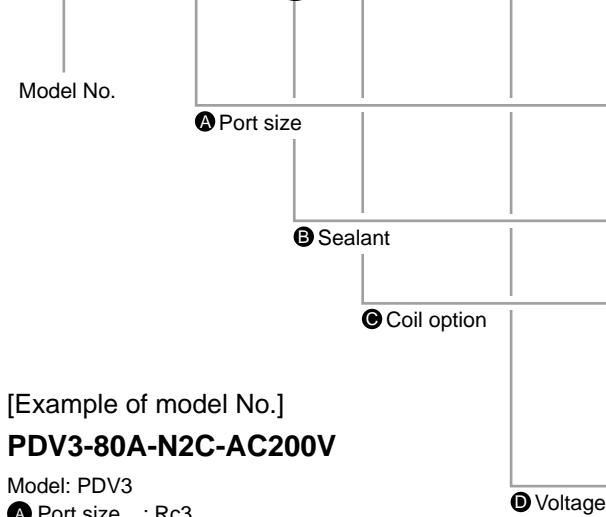
How to order

- Air operated

PD3 - 80A - N

- With solenoid valve

PDV3 - 80A - N 2C - AC200V



[Example of model No.]

PDV3-80A-N2C-AC200V

Model: PDV3

- **A** Port size : Rc3
- **B** Sealant : Nitrile rubber
- **C** Coil option : Grommet lead wire
- **D** Voltage : 200 VAC(50/60 Hz)

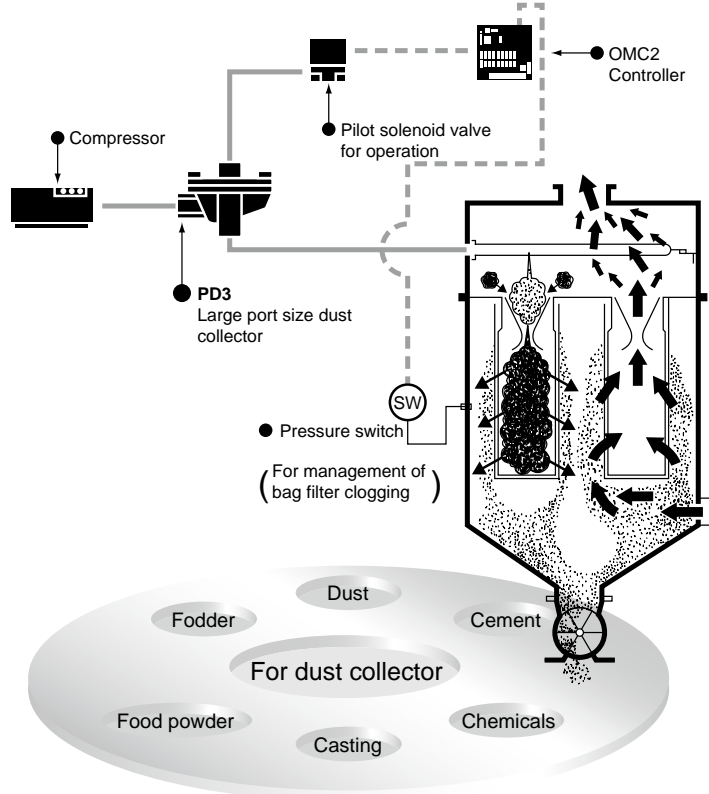
		Model No.	
Code	Description	PD3	PDV3
A Port size			
65A	Rc2½	●	●
80A	Rc3	●	●
B Sealant			
N	Nitrile rubber	●	●
C Coil option			
2C	Standard	Grommet lead wire	●
2E	Option	With DIN terminal box (G1/2)	●
2G		With DIN terminal box (Pg11)	●
2H		DIN terminal box/with lamp (Pg11)	●
D Voltage			
AC100V	100 VAC(50/60 Hz), 110 VAC(60 Hz)		●
AC200V	200 VAC(50/60 Hz)		●
AC220V	220 VAC(50/60 Hz)		●

- EXA
- FWD
- HNB/G
- USB/G
- FAB/G
- FGB/G
- FVB
- FWB/G
- FHB
- FLB
- AB
- AG
- AP/AD
- APK/ADK
- DryAir
- EX-XPLNprf
- XPLNprf
- HVB/HVL
- S/B/NAB
- LAD/NAD
- Water-Rela
- NP/NAP/NVP
- SNP
- CHB/G
- MXB/G
- Other valves
- SWD/MWD
- DustColl**
- CVE/CVSE
- CCH/CPE/D
- LifeSci
- Gas-Combus
- Auto-Water
- Outdoor
- SpecFld
- Custom
- Ending

Features

- Large flow rate**
Port sizes 65A and 80A added to the PD3/PDV3 Series.
- RoHS compliant**

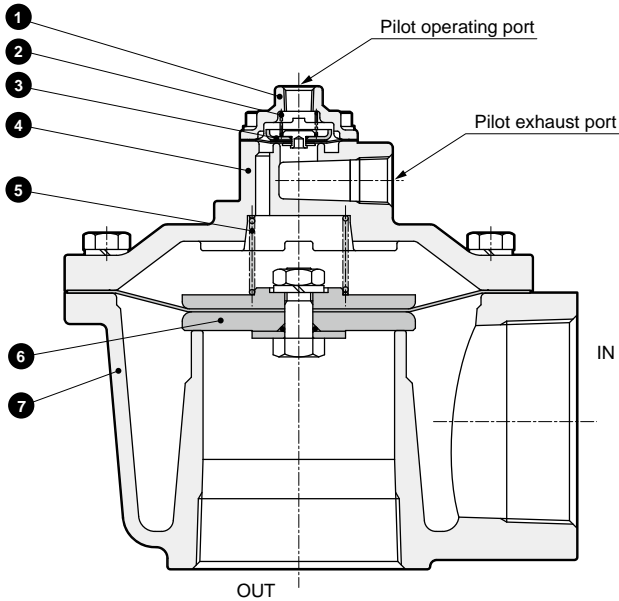
Dust collector valve control system example



PD3/PDV3-65A/80A Series

Internal structure and parts list: Air operated

● Sealant material: Nitrile rubber
 ·PD3-65A/80A-N



No.	Part name	Material
1	Cap	ADC12 Aluminum die-casting
2	Pilot spring	SUS304 Stainless steel
3	Pilot diaphragm assembly	SUS304,NBR: Stainless steel, nitrile rubber PTFE: Tetrafluoroethylene resin
4	Body	AC4C Aluminum casting
5	Mainspring	SUS304 Stainless steel
6	Main diaphragm assembly	SUS304,A2017: Stainless steel, aluminum NBR,PA: Nitrile rubber, nylon resin
7	Body	AC4C Aluminum casting

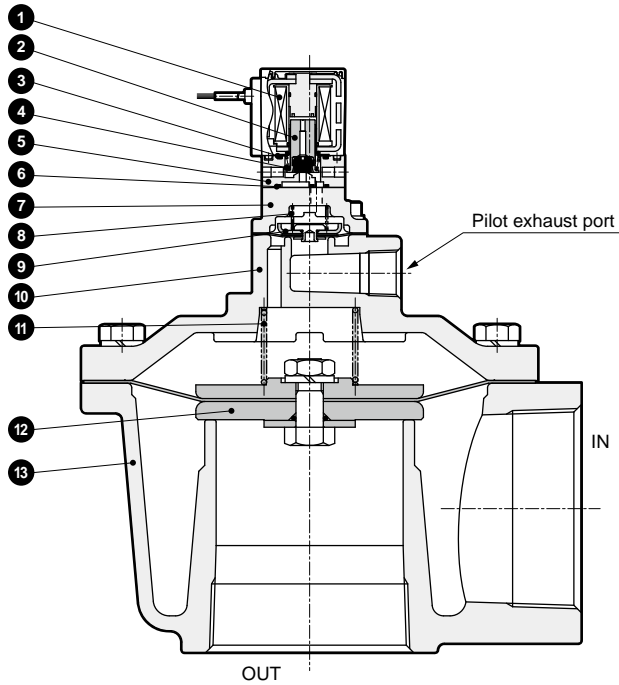
- EXA
- FWD
- HNB/G
- USB/G
- FAB/G
- FGB/G
- FVB
- FWB/G
- FHB
- FLB
- AB
- AG
- AP/AD
- APK/ADK
- DryAir
- EX-XPLNprf
- XPLNprf
- HVB/HVL
- S◇B/NAB
- LAD/NAD
- Water-Rela
- NP/NAP/NVP
- SNP
- CHB/G
- MXB/G
- Other valves
- SWD/MWD
- DustColl**
- CVE/CVSE
- CCH/CPE/D
- LifeSci
- Gas-Combus
- Auto-Water
- Outdoor
- SpecFld
- Custom
- Ending

PD3/PDV3-65A/80A Series

Internal structure and parts list

Internal structure and parts list: With solenoid valve

- Sealant material: Nitrile rubber
- PDV3-65A/80A-N



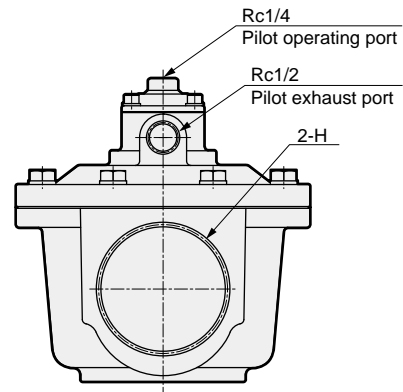
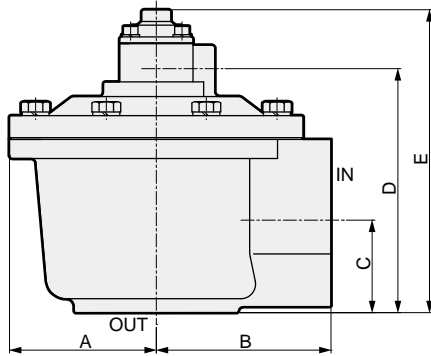
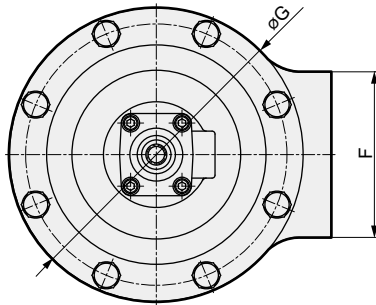
No.	Part name	Material
1	Coil assembly	Class B molded coil
2	Plunger assembly	K-M31,NBR; Stainless steel, nitrile rubber PET; Polyethylene terephthalate
3	O-ring	NBR; Nitrile rubber
4	Plunger spring	SUS304; Stainless steel
5	Body	PPS; Polyphenylene sulfide
6	Gasket	NBR; Nitrile rubber
7	Cap	AC4C; Aluminum casting
8	Pilot spring	SUS304; Stainless steel
9	Pilot diaphragm assembly	SUS304,NBR; Stainless steel, nitrile rubber, PTFE; tetrafluoroethylene resin
10	Body	AC4C; Aluminum casting
11	Mainspring	SUS304; Stainless steel
12	Main diaphragm assembly	SUS304,A2017; Stainless steel, aluminum NBR,PA; Nitrile rubber, nylon resin
13	Body	AC4C; Aluminum casting

EXA
FWD
HNB/G
USB/G
FAB/G
FGB/G
FVB
FWB/G
FHB
FLB
AB
AG
AP/
AD
APK/
ADK
DryAir
EX-
XPLNprf
XPLNprf
HVB/
HVL
S B/
NAB
LAD/
NAD
Water-
Rela
NP/NAP/
NVP
SNP
CHB/G
MXB/G
Other
valves
SWD/
MWD
DustColl
CVE/
CVSE
CCH/
CPE/D
LifeSci
Gas-
Combus
Auto-
Water
Outdoor
SpecFld
Custom
Ending

PD3/PDV3-65A/80A Series

Dimensions: PD3 Series

- Air operated
- PD3-65A/80A-N

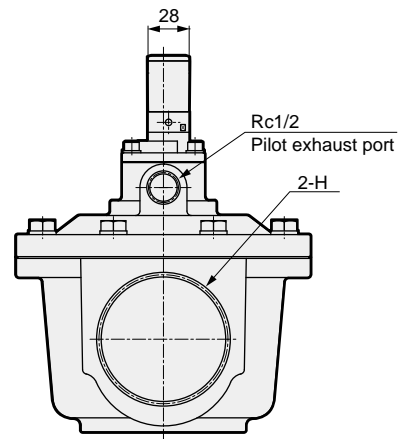
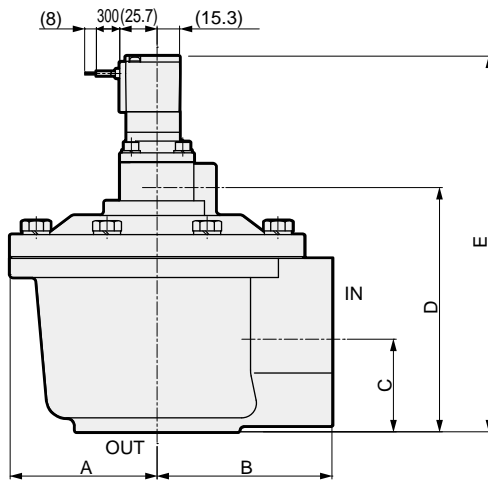
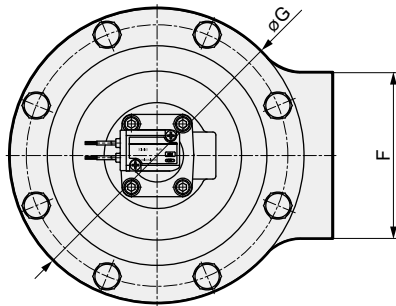


Model No.	A	B	C	D	E	F	G	H
PD3-65A-N	92	117.5	48	141	181	92	ø184	Rc2 ¹ / ₂
PD3-80A-N	100	119	63	166	206	110	ø200	Rc3

- EXA
- FWD
- HNB/G
- USB/G
- FAB/G
- FGB/G
- FVB
- FWB/G
- FHB
- FLB
- AB
- AG
- AP/AD
- APK/ADK
- DryAir
- EX-XPLNprf
- XPLNprf
- HVB/HVL
- S[◇]B/NAB
- LAD/NAD
- Water-Rela
- NP/NAP/NVP
- SNP
- CHB/G
- MXB/G
- Other valves
- SWD/MWD
- DustColl
- CVE/CVSE
- CCH/CPE/D
- LifeSci
- Gas-Combus
- Auto-Water
- Outdoor
- SpecFld
- Custom
- Ending

Dimensions

- Grommet lead wire with solenoid valve
- PDV3-65A/80A-N2C

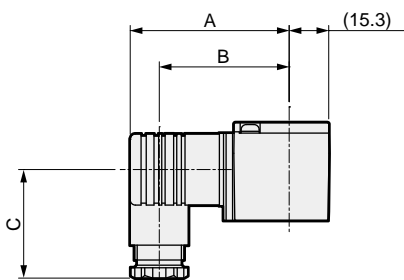


Model No.	A	B	C	D	E	F	G	H
PDV3-65A-N	92	117.5	48	141	230	92	ø184	Rc2 ¹ / ₂
PDV3-80A-N	100	119	63	166	256	110	ø200	Rc3

Optional dimensions

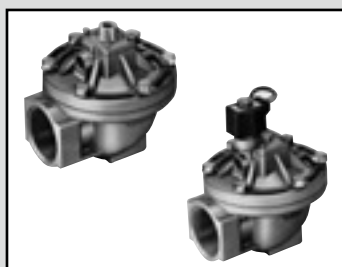
- DIN terminal box (with lamp)
- PDV3-65A/80A-N

2E
2G
2H



Model No.	A	B	C	D
PDV3-65A/80A-N2E	62.7	51.2	45	G1/2
PDV3-65A/80A-N2G	61.7	50.2	39	Pg11
PDV3-65A/80A-N2H	61.7	50.2	39	Pg11

EXA
FWD
HNB/G
USB/G
FAB/G
FGB/G
FVB
FWB/G
FHB
FLB
AB
AG
AP/ AD
APK/ ADK
DryAir
EX- XPLNprf
XPLNprf
HVB/ HVL
S ¹ / ₂ B/ NAB
LAD/ NAD
Water- Rela
NP/NAP/ NVP
SNP
CHB/G
MXB/G
Other valves
SWD/ MWD
DustColl
CVE/ CVSE
CCH/ CPE/D
LifeSci
Gas- Combus
Auto- Water
Outdoor
SpecFld
Custom
Ending



Pilot operated 2-port valve for dust collector
(Large port size dust collector)

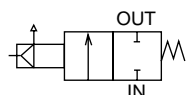
PD2/PDV2 Series

- Air operated/with solenoid valve
- Port size: Rc2

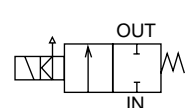


JIS symbol

- PD2 (Air operated)



- PDV2 (With solenoid valve)



Specifications

Item	Air operated	With solenoid valve
	PD2-50A	PDV2-50A
Working fluid	Air (no corrosive gas)	
Min. working pressure differential MPa	0.1 (≈15 psi, 1 bar)	
Max. working pressure differential MPa	0.7 (≈100 psi, 7 bar)	
Max. working pressure MPa	0.7 (≈100 psi, 7 bar)	
Proof pressure (water pressure) MPa	1.5 (≈220 psi, 15 bar)	
Fluid temperature °C	-10 (14°F) to 60 (140°F), -10 (14°F) to 100 (212°F) for fluoro rubber seal (no freezing)	
Ambient temperature °C	-10 (14°F) to 60 (140°F), -10 (14°F) to 100 (212°F) for fluoro rubber seal	
Atmosphere	Place free of corrosive gas and explosive gas	
Valve structure	Pilot operated poppet structure	
Valve seat leakage cm ³ /min	50 or less	
Port size	Rc2	
Orifice size mm	53	
Cv	62	
Pilot port size	Rc1/4	-
Weight kg	1.9	2.1
Mounting orientation	Unrestricted	
Working environment	Indoors/outdoors	Indoors
Electrical specifications	PDV2	
Rated voltage	100 VAC (50/60 Hz)/110 VAC (60 Hz), 200 VAC (50/60 Hz)/220 VAC (60 Hz), 12 VDC, 24 VDC/48 VDC/100 VDC	
Voltage fluctuation range	-10 to +10% of rated voltage	
Apparent power VA	12(50 Hz), 10(60 Hz)	
Power consumption W	11(DC)	
Thermal class	Class 130 (B) (coil option 4A: Class 180 (H))	

*1 : For a solenoid valve for driving the air operated PD2-50A, use FAB31-8-3 (page 52), AB31-02-3 (page 154), AB41E4-02-3-03T (explosion-proof, page 424) or PJVB (page 842).

*2 : Contact CKD when using as a dust collector for ash treatment or combustion gas at a waste incinerator.

*3 : The combination of PD2 and PJVB is recommended for outdoor use.

EXA
FWD
HNB/G
USB/G
FAB/G
FGB/G
FVB
FWB/G
FHB
FLB
AB
AG
AP/
AD
APK/
ADK
DryAir
EX-
XPLNprf
XPLNprf
HVB/
HVL
S ◇ B/
NAB
LAD/
NAD
Water-
Rela
NP/NAP/
NVP
SNP
CHB/G
MXB/G
Other
valves
SWD/
MWD
DustColl
CVE/
CVSE
CCH/
CPE/D
LifeSci
Gas-
Combus
Auto-
Water
Outdoor
SpecFld
Custom
Ending

How to order

- Air operated

PD2 - 50A - ○ - ○ - S

- With solenoid valve

PDV2 - 50A - ○ - 2E - S - AC100V

Model No.

Port size
Rc2

A Sealant
*2

B Coil option
*2
*3

C Other options
*2

D Voltage
*3
*4

[Example of model No.]

PDV2-50A-2E-S-AC100V

Model: PDV2 (port size Rc2)

- A** Sealant : Nitrile rubber
- B** Coil option : With DIN terminal box (G1/2)
- C** Other options : With silencer
- D** Voltage : 100 VAC(50/60 Hz)/110 VAC(60 Hz)

		Model No.	
		PD2	PDV2
A Sealant			
Blank	Nitrile rubber	●	●
F	Fluoro rubber	●	●
B Coil option			
Blank	Std. Grommet lead wire		●
2E	With DIN terminal box (G1/2)		●
2G	With DIN terminal box (Pg11)		●
2H	DIN terminal box with small lamp (Pg11)		●
3A	Open frame lead wire		●
3M	Open frame + HP terminal box (G1/2)		●
3N	Open frame + HP terminal box with lamp (G1/2)		●
4A	Open frame lead wire (thermal class H)		●
C Other options			
Blank	No option	●	●
S	Silencer (SLW-10A) (attached with the product)	●	●
D Voltage			
AC100V	100 VAC(50/60 Hz)/110 VAC(60 Hz)		●
AC200V	200 VAC(50/60 Hz)/220 VAC(60 Hz)		●
DC12V	12 VDC		●
DC24V	24 VDC		●
DC48V	48 VDC		●
DC100V	100 VDC		●

*1 : The combinations indicated with ● above are available.

*2 : For Item **A** F (sealant material: fluoro rubber), only Item **B** 4A (coil option) and Item **C** Blank (without option) are available.

*3 : When Item **B** (coil option) is "blank" or 4A, only AC voltage is available.

*4 : For voltages other than above, contact CKD.

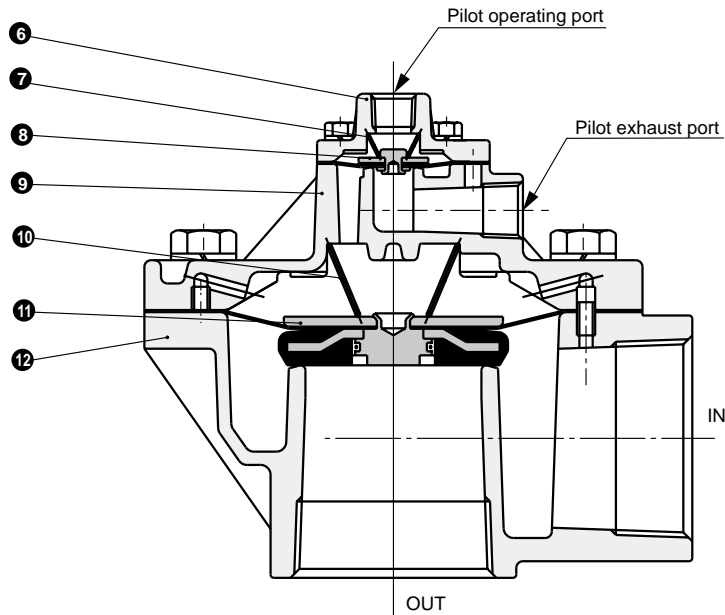
EXA
FWD
HNB/G
USB/G
FAB/G
FGB/G
FVB
FWB/G
FHB
FLB
AB
AG
AP/ AD
APK/ ADK
DryAir
EX- XPLNprf
XPLNprf
HVB/ HVL
S ♂ B/ NAB
LAD/ NAD
Water- Rela
NP/NAP/ NVP
SNP
CHB/G
MXB/G
Other valves
SWD/ MWD
DustColl
CVE/ CVSE
CCH/ CPE/D
LifeSci
Gas- Combus
Auto- Water
Outdoor
SpecFld
Custom
Ending

PD2/PDV2 Series

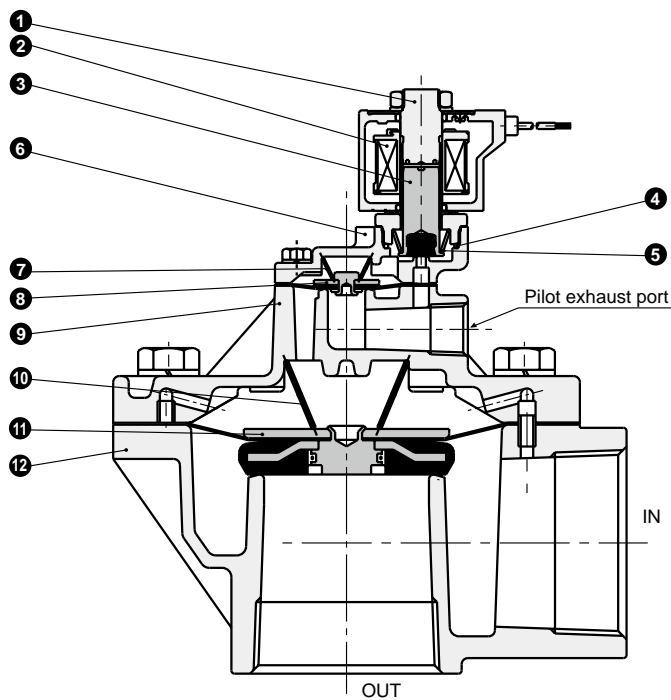
- EXA
- FWD
- HNB/G
- USB/G
- FAB/G
- FGB/G
- FVB
- FWB/G
- FHB
- FLB
- AB
- AG
- AP/AD
- APK/ADK
- DryAir
- EX-XPLNprf
- XPLNprf
- HVB/HVL
- S \diamond B/NAB
- LAD/NAD
- Water-Rela
- NP/NAP/NVP
- SNP
- CHB/G
- MXB/G
- Other valves
- SWD/MWD
- DustColl**
- CVE/CVSE
- CCH/CPE/D
- LifeSci
- Gas-Combus
- Auto-Water
- Outdoor
- SpecFld
- Custom
- Ending

Internal structure and parts list

● Air operated
PD2-50A



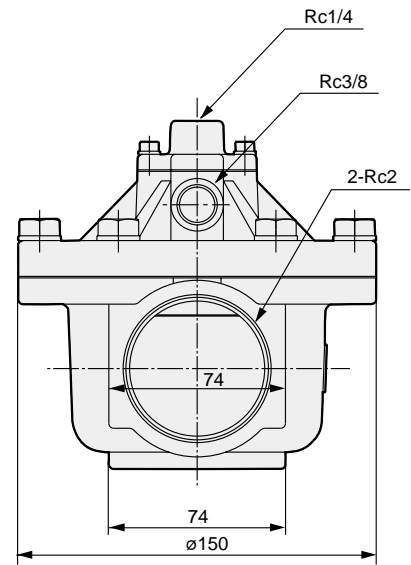
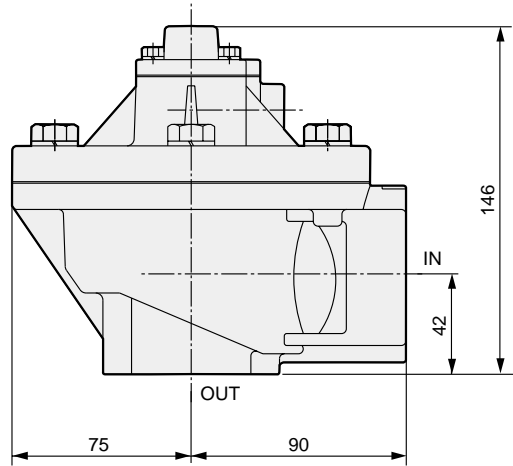
● Grommet lead wire with solenoid valve
PDV2-50A



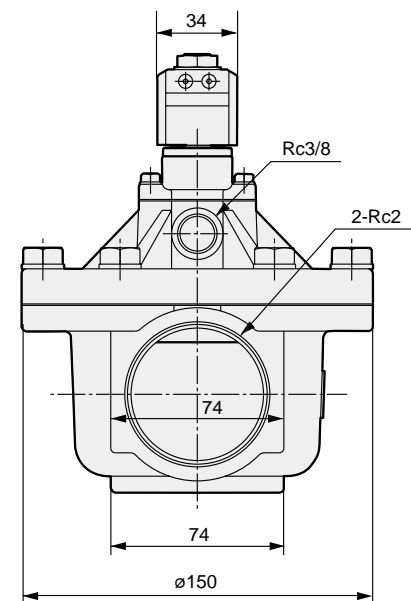
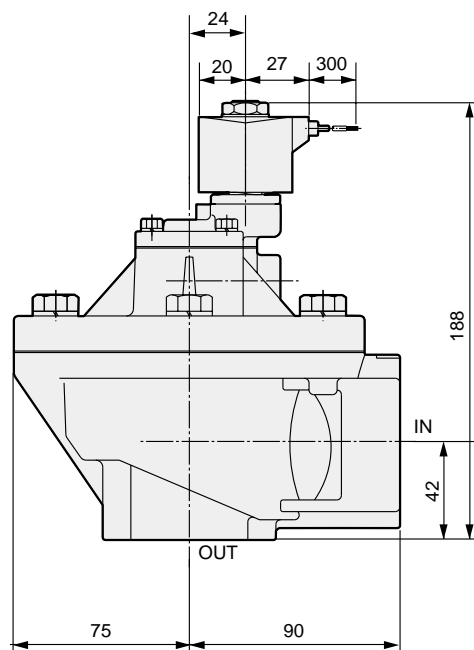
No.	Part name	Material	No.	Part name	Material
1	Core assembly	SUS405, 403, 316L	7	Pilot spring	SUS304
2	Coil assembly		8	Pilot diaphragm assembly	SUS304, NBR or FKM, PTFE
3	Plunger assembly	SUS405, NBR or FKM	9	Body	ADC12
4	O-ring	NBR or FKM	10	Mainspring	SUS304
5	Plunger spring	SUS304	11	Main diaphragm assembly	SUS304, 316L, NBR or FKM
6	Cap	ADC12	12	Body	ADC12

Dimensions

- Air operated
PD2-50A



- Grommet lead wire with solenoid valve
PDV2-50A



EXA
FWD
HNB/G
USB/G
FAB/G
FGB/G
FVB
FWB/G
FHB
FLB
AB
AG
AP/ AD
APK/ ADK
DryAir
EX- XPLNprf
XPLNprf
HVB/ HVL
S ⚡ B/ NAB
LAD/ NAD
Water- Rela
NP/NAP/ NVP
SNP
CHB/G
MXB/G
Other valves
SWD/ MWD
DustColl
CVE/ CVSE
CCH/ CPE/D
LifeSci
Gas- Combus
Auto- Water
Outdoor
SpecFld
Custom
Ending

PD2/PDV2 Series

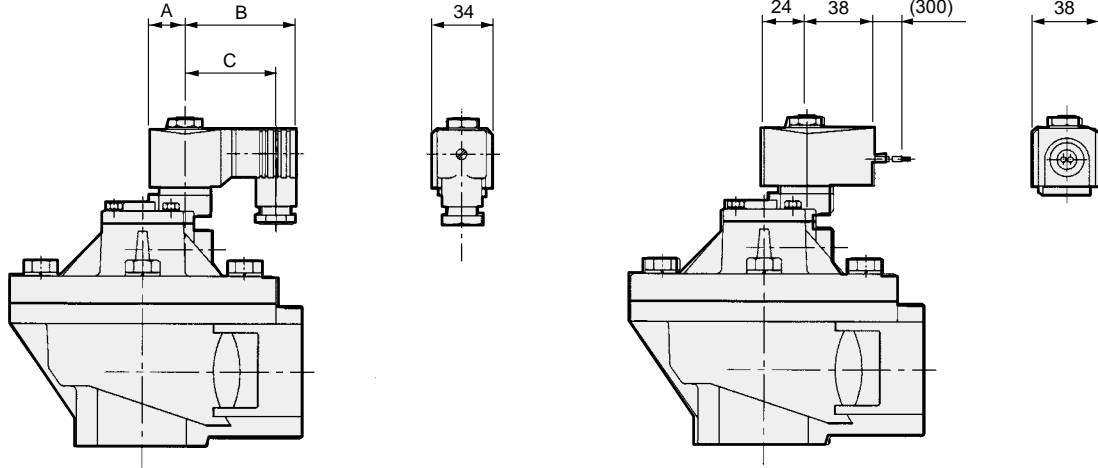
Optional dimensions

- With DIN terminal box
DIN terminal box with small lamp
PDV2-50A-

2E
2G
2H

- Open frame lead wire
PDV2-50A-

3A
4A



Voltage	A	B	C
AC	20	62	50.5(50)
DC	21	63.5	52(51.5)

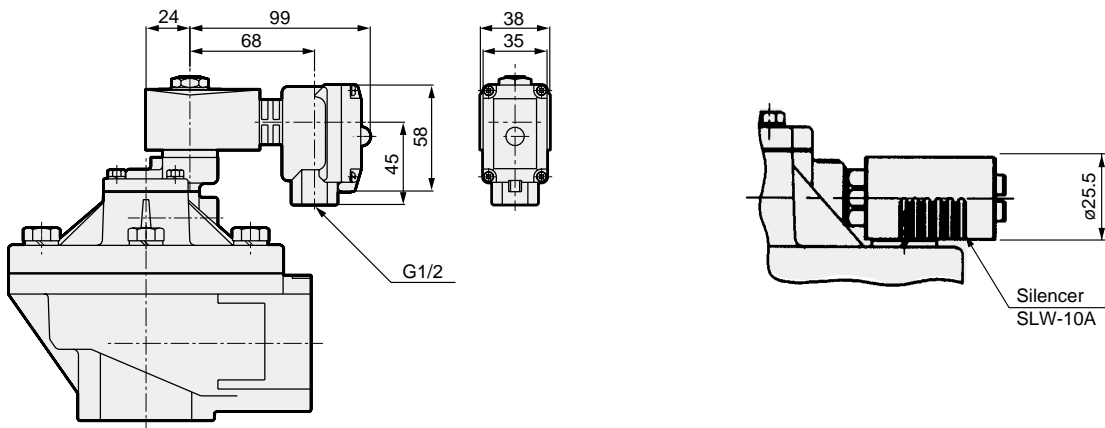
* Dimensions shown in () are for 2E.

- Open frame with square terminal box
Open frame with square terminal box with lamp
PDV2-50A-

3M
3N

- Silencer (screw)
PD2/PDV2-*

S



- EXA
- FWD
- HNB/G
- USB/G
- FAB/G
- FGB/G
- FVB
- FWB/G
- FHB
- FLB
- AB
- AG
- AP/AD
- APK/ADK
- DryAir
- EX-XPLNprf
- XPLNprf
- HVB/HVL
- S \diamond B/NAB
- LAD/NAD
- Water-Rela
- NP/NAP/NVP
- SNP
- CHB/G
- MXB/G
- Other valves
- SWD/MWD
- DustColl
- CVE/CVSE
- CCH/CPE/D
- LifeSci
- Gas-Combus
- Auto-Water
- Outdoor
- SpecFld
- Custom
- Ending