

Manual Selector Valve HMVE, HSVE Series



Features

- Aluminum body dramatically reduces weight
- Reduces the number of parts and waste
- Max. flow characteristics 14.2dm³/(s·bar)
Large flow rates (1.4 times conventional models)



Common specifications

Item	HMVE	HSVE		
Port size	Rc1/4	Rc3/8	Rc1/2	Rc3/4
Valve type and operation	Slide valve			
Working fluid	Compressed air			
Min. working pressure MPa	0.05			
Max. working pressure MPa	1.0			
Proof pressure MPa	1.5			
Ambient temperature °C	-5 to 50 (no freezing)			
Fluid temperature °C	5 to 50			
Lubrication	Not required (*1)			
Degree of protection	Dust-proof			
Operating angle	90°			
Atmosphere	Cannot be used in corrosive gas environments			
Weight g	280	1,100		

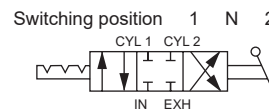
*1: Use turbine oil Class 1 ISOVG32 for lubrication. Excessive or intermittent lubrication results in unstable operation.

Flow characteristics

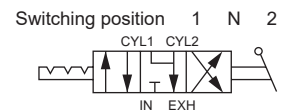
Model No.	Port size	Flow characteristics [dm ³ /(s·bar)]	Flow rate [L/min(ANR)]
HMVE	Rc1/4	1.4	504
	Rc3/8	11.8	4248
HSVE	Rc1/2	12.8	4608
	Rc3/4	14.2	5112

Circuit diagram code

● HMVEC, HSVEC
(All ports closed)



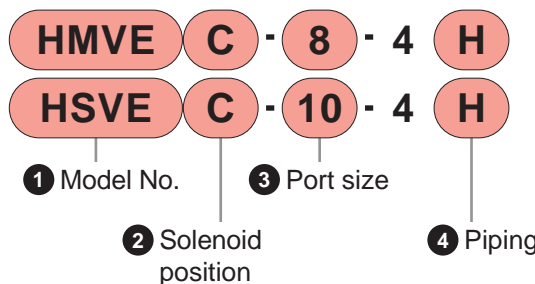
● HMVEO, HSVEO
(ABR connection)



How to order

● Miniature

● Standard



2 Solenoid position

Code	Descriptions
C	3-position all ports closed
O	3-position ABR connection *1

*1: ③ Port size "20" is a Special-order product.

3 Port size

		1 Model No.	
Code	Descriptions	HMVE	HSVE
8	Rc1/4	●	
10	Rc3/8		●
15	Rc1/2		●
20	Rc3/4		●

4 Piping

		1 Model No.	
Code	Descriptions	HMVE	HSVE
H	Side piping	●	●
V	Vertical piping *1		●

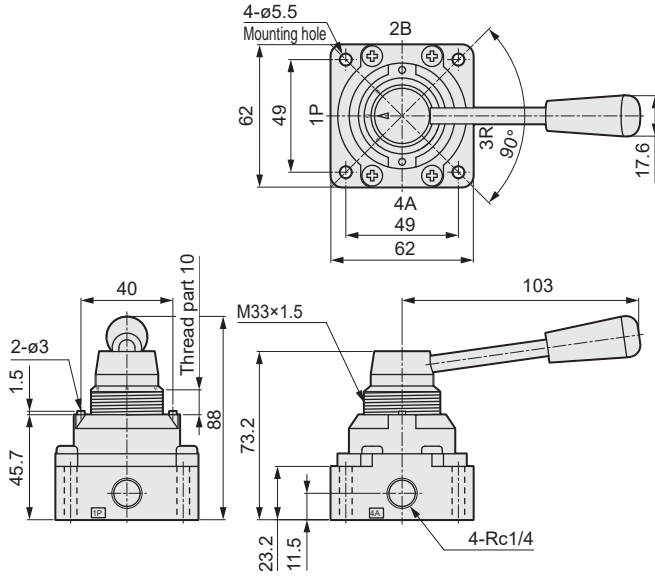
*1: ③ Vertical piping with port sizes "15" and "20" is Special-order product.

⚠ Always read the precautions described in "Pneumatic Valves (Catalog No. CB-023SA)" before use.

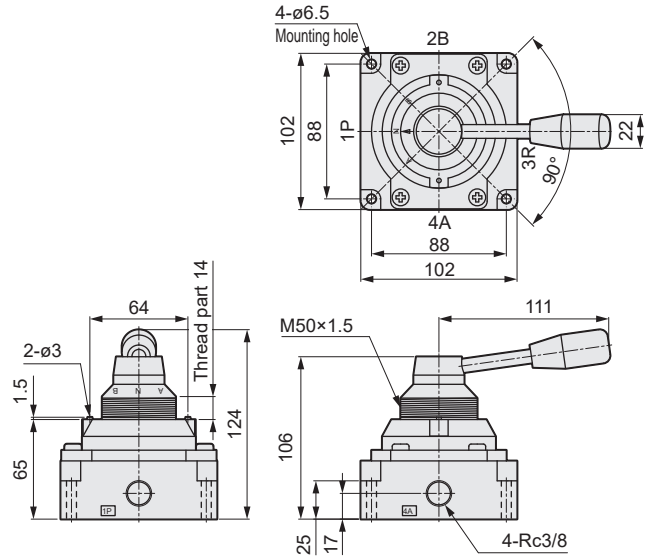
HMVE, HSVE Series

Dimensions

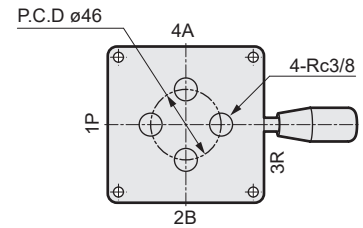
- HMVEC-8-4H
- HMVEO-8-4H



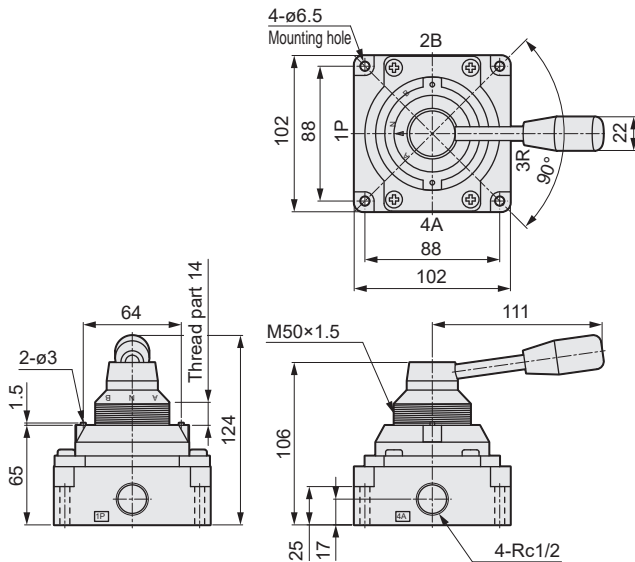
- HSVEC-10-4H(V)
- HSVEO-10-4H(V)



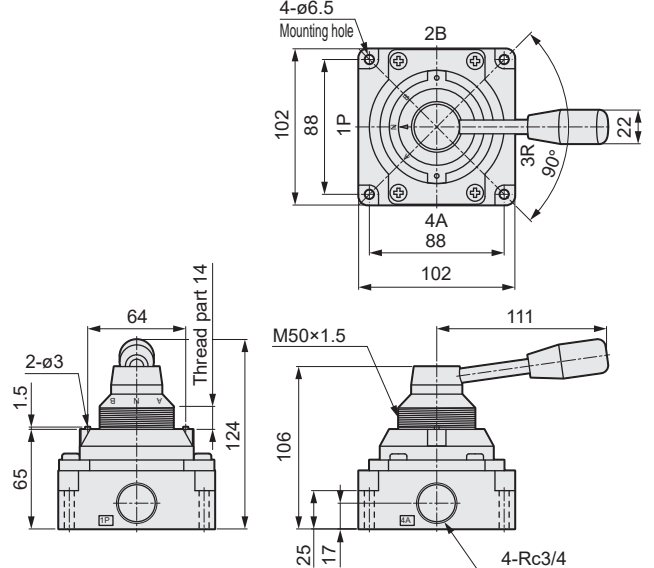
- Vertical piping (V)



- HSVEC-15-4H
- HSVEO-15-4H



- HSVEC-20-4H
- HSVEO-20-4H



The goods and/or their replicas, the technology and/or software found in this catalog are subject to complementary export regulations by Foreign Exchange and Foreign Trade Law of Japan. The law requires a license from Ministry of Economy, Trade and Industry to export them.

CKD Corporation

[Website]

<https://www.ckd.co.jp/en/>

Head Office · Plant
Tokyo Office

Osaka Office

2-250, Oujii, Komaki, Aichi 485-8551

4F, Bunkahousou Media Plus, 1-31-1, Hamamatsu-cho,
Minato-ku, Tokyo 105-0013

6F, PMO EX Shin-Osaka, 4-2-10 Miyahara,
Yodogawa-ku, Osaka 532-0003

TEL(0568)77-1111 FAX(0568)77-1123

TEL(03)5402-3620 FAX(03)5402-0120

TEL(06)6396-9630 FAX(06)6396-9631