



Pressure gauge with safety mark

G40D Series

Easy visual inspection control due to green and red zone display.

● Port size: R1/8, R1/4

JIS symbol



Specifications

1 MPa = 10 bar

Item	G40D	
	P10	P04
Working fluid	Compressed air	
Full scale MPa	1.0 (≈150 psi, 10 bar)	0.4 (≈58 psi, 4 bar)
Safety marker setting range MPa	0.15 (≈22 psi) to 1.0 (≈150 psi)	0.06 (≈8.7 psi) to 0.4 (≈58 psi)
Max. setting width MPa	0.45 (≈65 psi, 4.5 bar)	0.18 (≈26 psi, 1.8 bar)
Ambient temperature °C	5 (41°F) to 60 (140°F)	
Fluid temperature °C	5 (41°F) to 60 (140°F)	
Port size R	1/8, 1/4	
Accuracy *1	Full scale ±3%	
Weight g	85	

*1: The guaranteed indicator accuracy temperature is 20±15°C.

Specifications for rechargeable battery

(Catalog No. CC-1226A)

● Design compatible with rechargeable battery manufacturing process

G40D-.....- P4

How to order

G40D - 8 - P10

A Model No.

B Port size

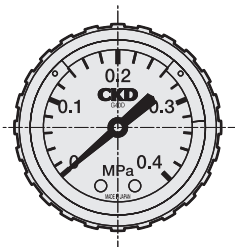
C Pressure display

Code	Description
A Model No.	
G40D	Pressure gauge with safety mark
B Port size	
6	R1/8
8	R1/4
C Pressure display	
P10	For 0 to 1.0 MPa
P04	For 0 to 0.4 MPa
P02	For 0 to 0.2 MPa

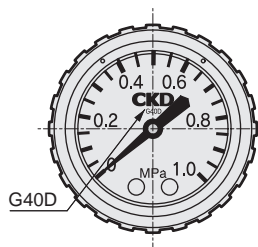
⚠ Precautions for model No. selection

* Designate R1/4 when mounting on F.R.L. Series.

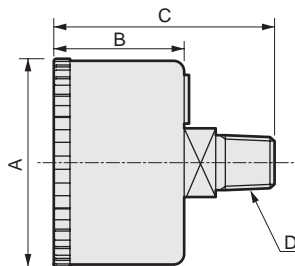
Dimensions and materials



Pressure display: P04

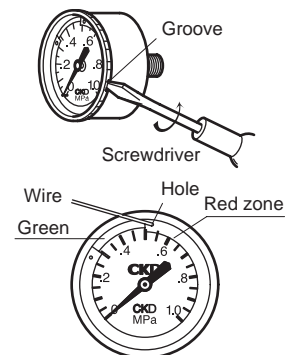


Pressure display: P10



How to adjust pressure range

When removing the transparent face



Part name	Material
Bourdon tube/stock	Copper alloy
Housing	Steel plate + paint
Lens	Polyamide resin
Marker	PBT resin

Model No.	A	B	C	D
G40D-6	ø42.5	26.5	44	R1/8
G40D-8			46	R1/4

Remove the transparent face and insert a needle into the hole in the red zone to move the red zone marker.
After adjustment, always reattach the transparent face before supplying pneumatic pressure.

F.R.L.
F.R.
F (Filtr)
R (Reg)
L (Lub)
Drain Separ
Mech Press SW
Res press exh valve
SlowStart
Anti-bac/Bac-remove Filtr
Film Resist FR
Oil-ProhR
Med Press FR
No Cu/ PTFE FRL
Outdrs FRL
Adapter Joiner
Press Gauge
CompFRL
LgFRL
PrecsR
VacF/R
Clean FR
ElecPneuR
AirBoost
Speed Ctrl
Silncr
CheckV/ other
Fit/Tube
Nozzle
Air Unit
PresCompn
Electro Press SW
ContactSW
AirSens
PresSW Cool
Air Flo Sens/Ctrl
WaterR/Sens
TotAirSys (Total Air)
TotAirSys (Gamma)
Gas generator
RefrDry
DesicDry
HiPolymDry
MainFiltr
Dischrg etc
Ending