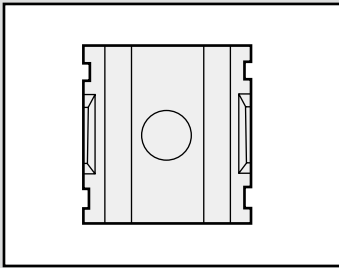
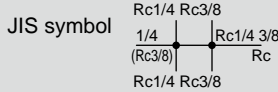


D101/D401/D801/D300-W Series



Compatible with pipe branching.

● Port size: 1/8 to 1



Specifications

| Item | D101-00-W | D401-00-W | D801-00-W | D300-W |
|----------------------------------|------------------------|-------------|-----------|---------|
| Working fluid | Compressed air | | | |
| Max. working pressure MPa | 1.0 (≈150 psi, 10 bar) | | | |
| Proof pressure MPa | 1.5 (≈220 psi, 15 bar) | | | |
| Number of branching ports | 1 | | | 4 |
| Port size Rc,NPT,G | 1/8,1/4 | 1/4,3/8,1/2 | 3/4,1 | 1/4,3/8 |
| Operating ambient temperature °C | 5 (41°F) to 60 (140°F) | | | |
| Weight (excluding joiner) kg | 0.045 | 0.13 | 0.35 | 0.26 |

Option weight

* Add to the weight of the standard accessories. Unit: kg

| Code | T type bracket | | | | |
|------|----------------|-------|-------|-------|------|
| | Blank | B11W | B31W | B41W | B81W |
| D101 | 0.011 | 0.024 | | | |
| D401 | 0.036 | | 0.086 | 0.094 | |
| D801 | 0.094 | | | | 0.17 |

Joiner weight is included when blank.

How to order

D101 - 00 - 6 - W - B11W

A Model No. (White type) **B Port size** **C Port thread** **D T type bracket**

| Code | Description |
|-------------------------|-----------------------------|
| A Model No. | |
| D101 | For 1000 Series |
| D401 | For 2000, 3000, 4000 Series |
| D801 | For 6000, 8000 Series |
| B Port size | |
| | D101 D401 D801 |
| 6 | 1/8 ● |
| 8 | 1/4 ● ● |
| 10 | 3/8 ● |
| 15 | 1/2 ● |
| 20 | 3/4 ● |
| 25 | 1 ● |
| C Port thread | |
| Blank | Rc thread |
| N | NPT thread |
| G | G thread |
| D T type bracket | |
| Blank | None ● ● ● |
| B11W | For 1000 Ser ● |
| B31W | For 2000 Series ● |
| B41W | For 4000 Ser ● |
| B81W | For 6000 Series ● |

D300 - 8 - W - Q

Distributor (White type) **A Port size** **B Port thread** **C Option**

| Code | Description |
|----------------------|--|
| A Port size | |
| 8 | 1/4 |
| 10 | 3/8 |
| B Port thread | |
| Blank | Rc thread |
| N | NPT thread |
| G | G thread |
| C Option | |
| Blank | None |
| Q | 1/4 blanking plug, 3/8 blanking plug, two of each attached |

Precautions for model No. selection

- *1: The joiner set (joiner, bolt, O-ring) and one gasket are enclosed as standard.
- *2: Contact CKD regarding 2-way branch.
- *3: D401-W can be connected to both 3000-W Series and 4000-W Series.

Precautions for model No. selection

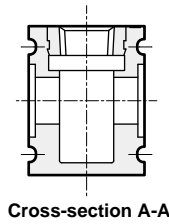
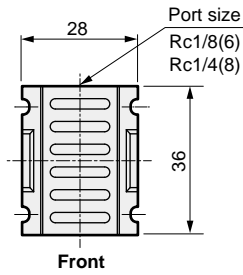
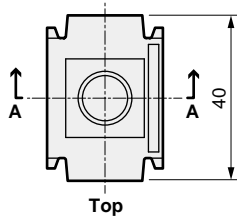
- *1: When using with C3000-W, C4000-W, the joiner set C4000-J400-W or T type bracket set B310-W/B410-W shall be connected.
- *2: The joiner set C4000-J400-W or T type bracket set should be ordered separately. (Refer to page 350)

Dimensions



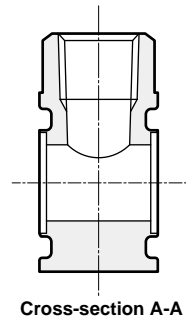
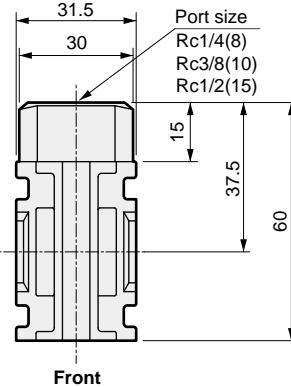
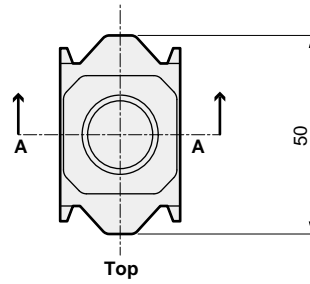
● D101-00-W

· Material: Polyamide resin



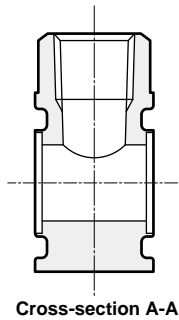
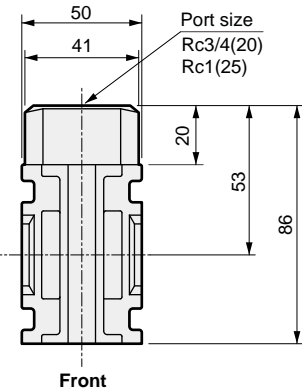
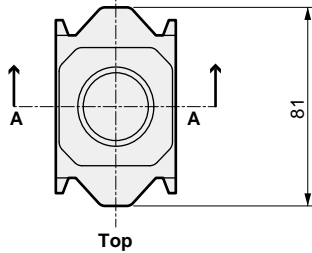
● D401-00-W

· Material: Aluminum alloy die-casting Painting



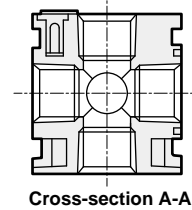
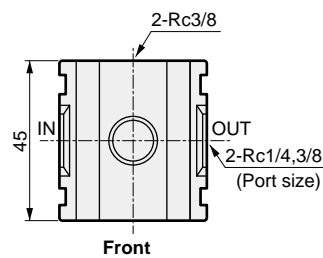
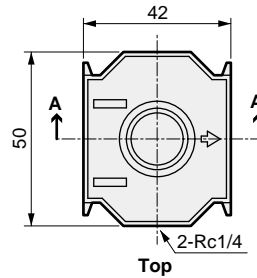
● D801-00-W

· Material: Aluminum alloy die-casting Painting

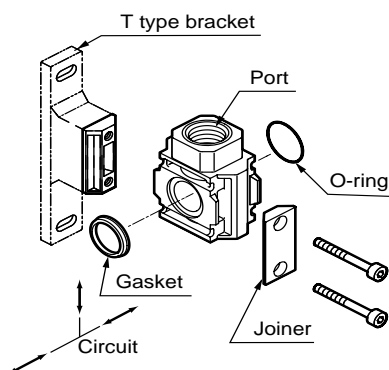


● D300-W

· Material: Aluminum alloy die-casting Painting



Assembly method (D101-00-W, D401-00-W, D801-00-W)



- *1: Insert the O-ring when mounting on the primary side, and the gasket when mounting on the secondary side for the air flow.
- *2: When inserting the O-ring and gasket during assembly, the O-ring and gasket must not be bent.

Usage example (D101-00-W, D401-00-W, D801-00-W)



| |
|---------------------------|
| F.R.L. |
| F.R. |
| F (Filtr) |
| R (Reg) |
| L (Lub) |
| Drain Separ |
| Mech Press SW |
| Res press exh valve |
| SlowStart |
| Anti-bac/Bac-remove Filtr |
| Film Resist FR |
| Oil-ProhR |
| Med Press FR |
| No Cu/ PTFE FRL |
| Outdrs FRL |
| Adapter Joiner |
| Press Gauge |
| CompFRL |
| LgFRL |
| PrecsR |
| VacF/R |
| Clean FR |
| ElecPneuR |
| AirBoost |
| Speed Ctrl |
| Silncr |
| CheckV/ other |
| Fit/Tube |
| Nozzle |
| Air Unit |
| PresCompn |
| Electro Press SW |
| ContactSW |
| AirSens |
| PresSW Cool |
| Air Flo Sens/Ctrl |
| WaterRSens |
| TotAirSys (Total Air) |
| TotAirSys (Gamma) |
| Gas generator |
| RefrDry |
| DesicDry |
| HiPolymDry |
| MainFiltr |
| Dischrg etc |
| Ending |